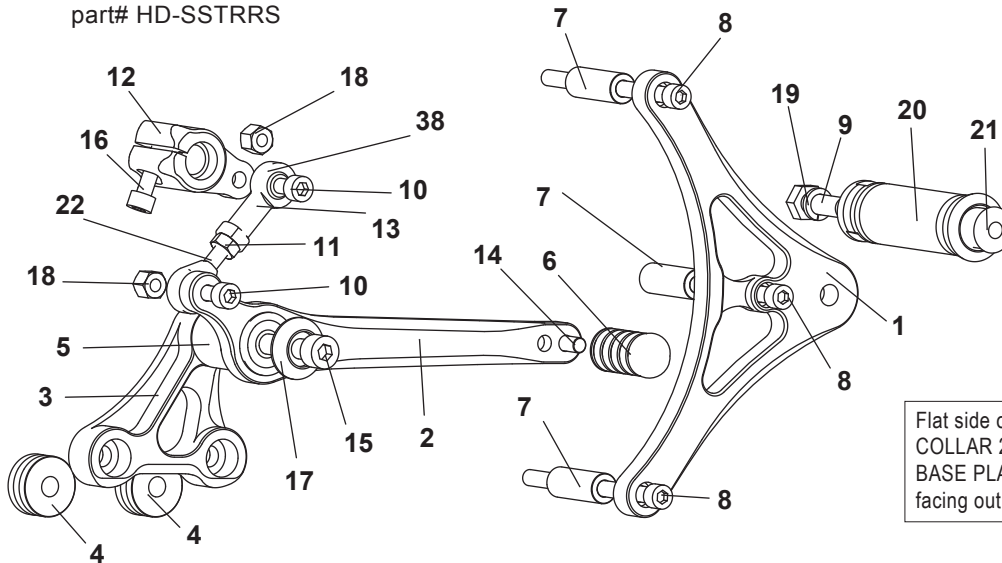


REAR SETS TYPE1

part# HD-SSTRRS

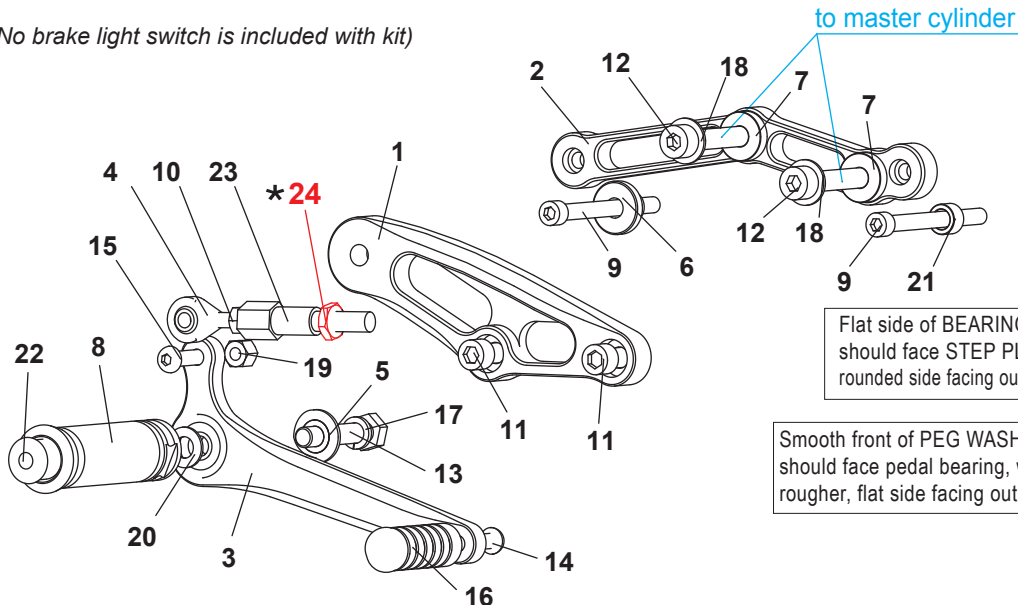
[L]



Flat side of FOOT PEG BEARING COLLAR 20 (#5) should face BASE PLATE(#3), with the stepped side facing out toward pedal bearing.

- | | |
|---------------------------------------------|------------------------------------|
| 1. STEP PLATE [L] [HD-SSTRSP-L] | 13. FEMALE ROD END M6 [RDED-F6] |
| 2. SHIFT PEDAL [SPD-103] | 14. BUTTON HEAD M6×15mm [BBT-M615] |
| 3. SHIFT BASE [SB-HDSSSTR] | 15. SOCKET HEAD M8×55mm [SBT-M855] |
| 4. BASE PLATE COLLAR 12 [BPCLR-12] ×2 | 16. SOCKET HEAD M6×20mm [SBT-M620] |
| 5. FOOT PEG BEARING COLLAR 20 [PEGBGCLR-20] | 17. BEARING BOLT COVER |
| 6. PEDAL TIP SHORT (DELRIN) | 18. LOCK NUT M6 [LNT-6] ×2 |
| 7. STEP PLATE COLLAR 32-6.4 ×3 | 19. SPLIT WASHER M8 [SWS-8] |
| 8. SOCKET HEAD 1/4-20×3.5in ×3 | 20. FOOT PEG [PEG] |
| 9. HEX BOLT M8×25mm [HBT-M825] | 21. FOOT PEG END CAP [ST-002] |
| 10. SOCKET HEAD M6×25mm [SBT-M625] ×2 | 22. MALE ROD END M6 [RDED-M6] |
| 11. PLAIN NUT M6 [NUT-6] | |
| 12. CHANGE ARM [CA-HD] | |

[R] (No brake light switch is included with kit)



Flat side of BEARING COLLAR SUS (#5) should face STEP PLATE (#1), with the rounded side facing out toward pedal bearing.

Smooth front of PEG WASHER M8 (#20) should face pedal bearing, with the rougher, flat side facing out toward peg.

- | | |
|---------------------------------------|------------------------------------|
| 1. STEP PLATE [R] [HD-SSTRSP-R] | 13. HEX BOLT M8×45mm [HBT-M845] |
| 2. MASTER BASE [R] [HD-SSTRMB] | 14. BUTTON HEAD M6×20mm [BBT-M620] |
| 3. BRAKE PEDAL [BPD-B3] | 15. BUTTON HEAD M6×25mm [BBT-M625] |
| 4. MALE ROD END M6 [RDED-M6] | 16. PEDAL TIP (DELRIN) [ST-001D] |
| 5. BEARING COLLAR SUS [BGCLR-SUS] | 17. SPLIT WASHER M8 [SWS-8] |
| 6. MASTER BASE COLLAR 12.4-8 | 18. PLAIN WASHER M8 [WS-8] ×2 |
| 7. MASTER COLLAR 5-8 ×2 | 19. LOCK NUT M6 [LNT-6] |
| 8. FOOT PEG [PEG] | 20. PEG WASHER M8 [PWS-8] |
| 9. SOCKET HEAD 1/4-20×2.75in ×2 | 21. MASTER BASE COLLAR 7.2-8 |
| 10. PLAIN NUT M6 [NUT-6] | 22. FOOT PEG END CAP [ST-002] |
| 11. SOCKET HEAD 5/16-18×1in ×2 | 23. BRAKE ROD [BRD-XLH] |
| 12. SOCKET HEAD M8×55mm [SBT-M855] ×2 | |

★ 24. INCH NUT (STOCK)

POSITIONS

R	250mm Back	20mm Up
L	230mm Back	15mm Up

Due to running improvements in the designs of Sato parts, some new replacement parts may look somewhat different than the original parts with the same part #. These slight differences are mostly cosmetic and have no effect on performance.