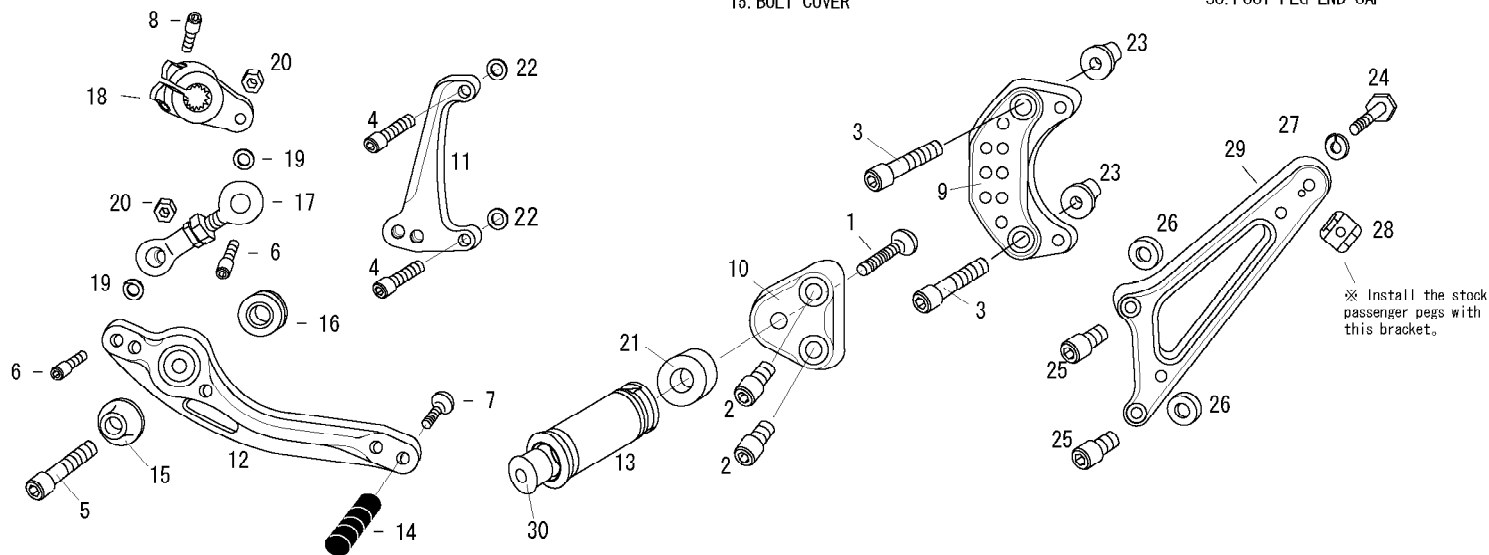


HARLEY-DAVIDSON SPORTSTER XL883/1200R'04- with TANDEM BRACKET(L)

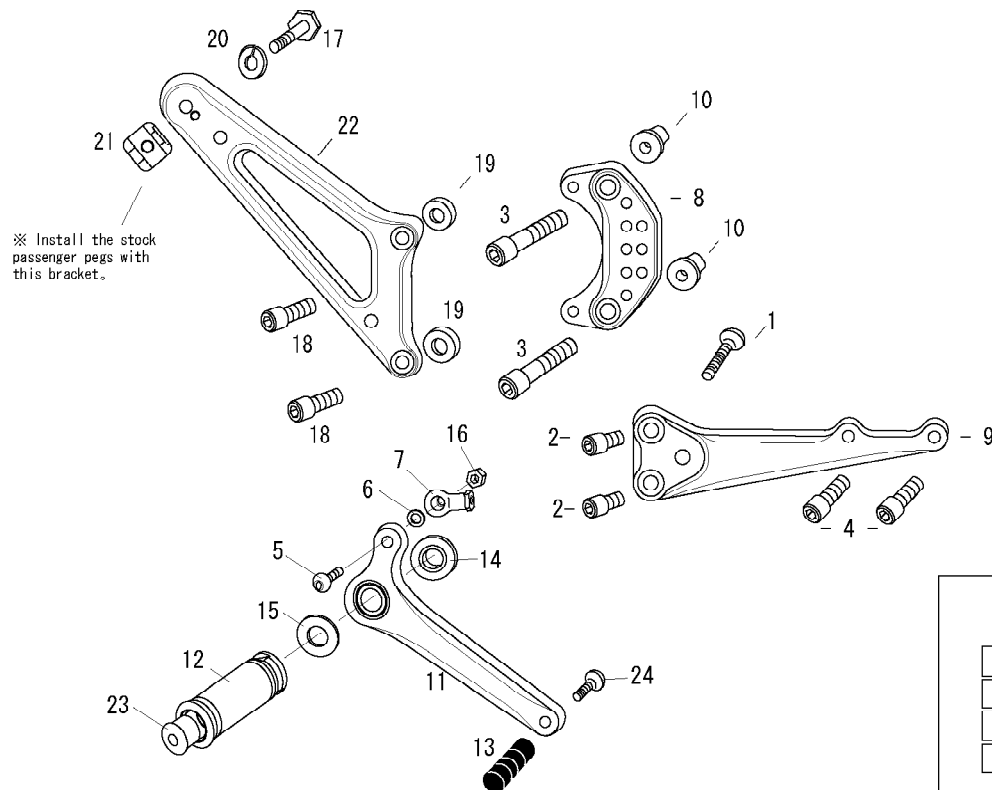
1. BUTTON HEAD M8 × 35mm
2. SOCKET HEAD M8 × 15mm × 2
3. (3/8-16) 2 INCH BOLT × 2
4. (1/4-20) 1 INCH BOLT × 2
5. SOCKET HEAD M8 × 40mm
6. SOCKET HEAD M6 × 25mm × 2
7. BUTTON HEAD M6 × 20mm
8. SOCKET HEAD M6 × 20mm
9. BASE PLATE [L]
10. STEP PLATE [L]
11. SHIFT BASE
12. SHIFT PEDAL
13. FOOT PEG
14. PEDAL TIP DELRIN
15. BOLT COVER

16. FOOT PEG BEARING COLLAR 10
17. SHIFT ROD
18. CHANGE ARM
19. ROD END COLLAR 3 × 2
20. PLAIN NUT M6 × 2
21. FOOT PEG COLLAR 15
22. COLLAR 3 × 2
23. BASE PLATE COLLAR 30 × 2
24. HEX HEAD M8 × 20mm
25. SOCKET HEAD M8 × 25mm × 2
26. TANDEM BRACKET COLLAR × 2
27. SPLIT WASHER M8
28. TANDEM BRACKET CLAMP
29. TANDEM BRACKET
30. FOOT PEG END CAP



HARLEY-DAVIDSON SPORTSTER XL883/1200R'04- with TANDEM BRACKET(R)

1. BUTTON HEAD M8 × 35mm
2. SOCKET HEAD M8 × 15mm × 2
3. (3/8-16) 2 INCH BOLT × 2
4. SOCKET HEAD M8 × 35mm × 2
5. BUTTON HEAD M6 × 25mm
6. ROD END COLLAR 3
7. M6-8 FEMALE ROD END
8. BASE PLATE [R]
9. STEP PLATE [R]
10. BASE PLATE COLLAR 30 × 2
11. BRAKE PEDAL
12. FOOT PEG
13. PEDAL TIP DELRIN
14. FOOT PEG BEARING COLLAR 5
15. PEG WASHER M8
16. PLAIN NUT M6
17. HEX HEAD M8 × 20mm
18. SOCKET HEAD M8 × 25mm × 2
19. TANDEM BRACKET COLLAR × 2
20. SPLIT WASHER M8
21. TANDEM BRACKET CLAMP
22. TANDEM BRACKET
23. FOOT PEG END CAP
24. BUTTON HEAD M6 × 20mm or 25mm



POSITIONS

1	220mm Back	35mm Up
2	230mm Back	35mm Up
3	230mm Back	50mm Up
4	230mm Back	20mm Up