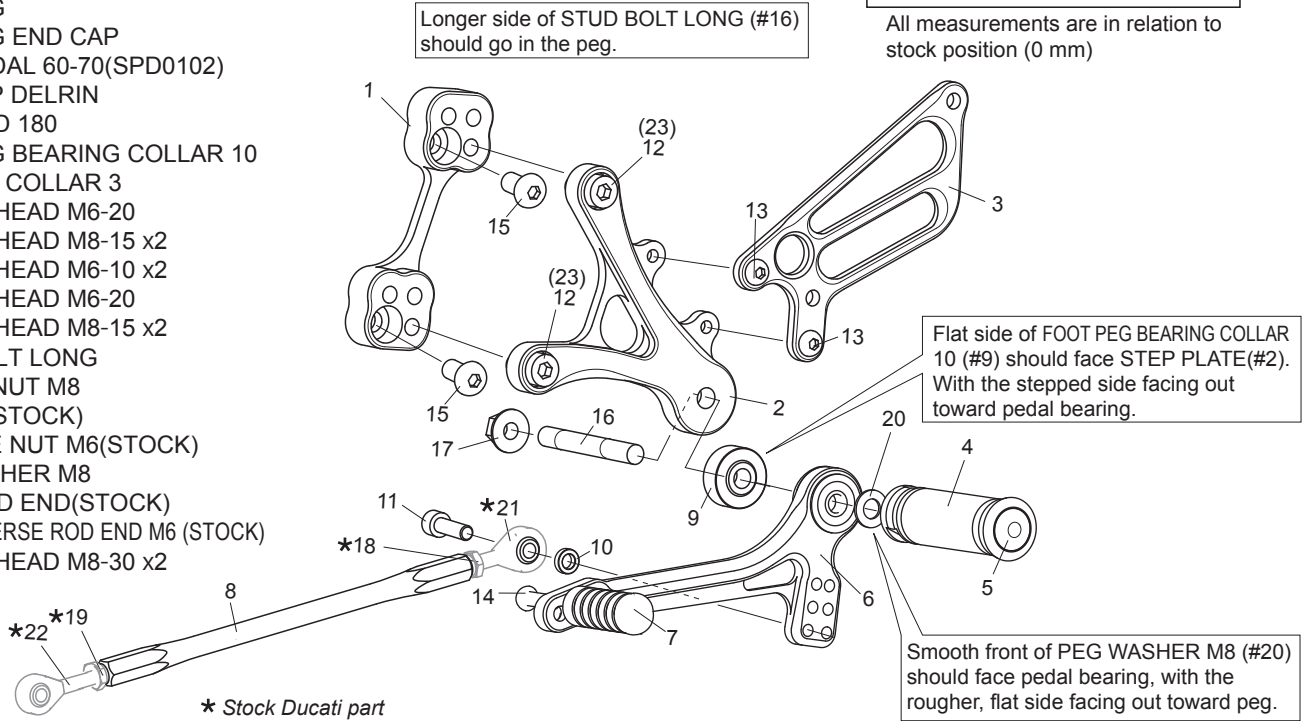


**DUCATI SS900/1000**  
(MH900e.PaulSmart1000LE.Sport1000) '98-  
**REAR SETS Type2 [L]**

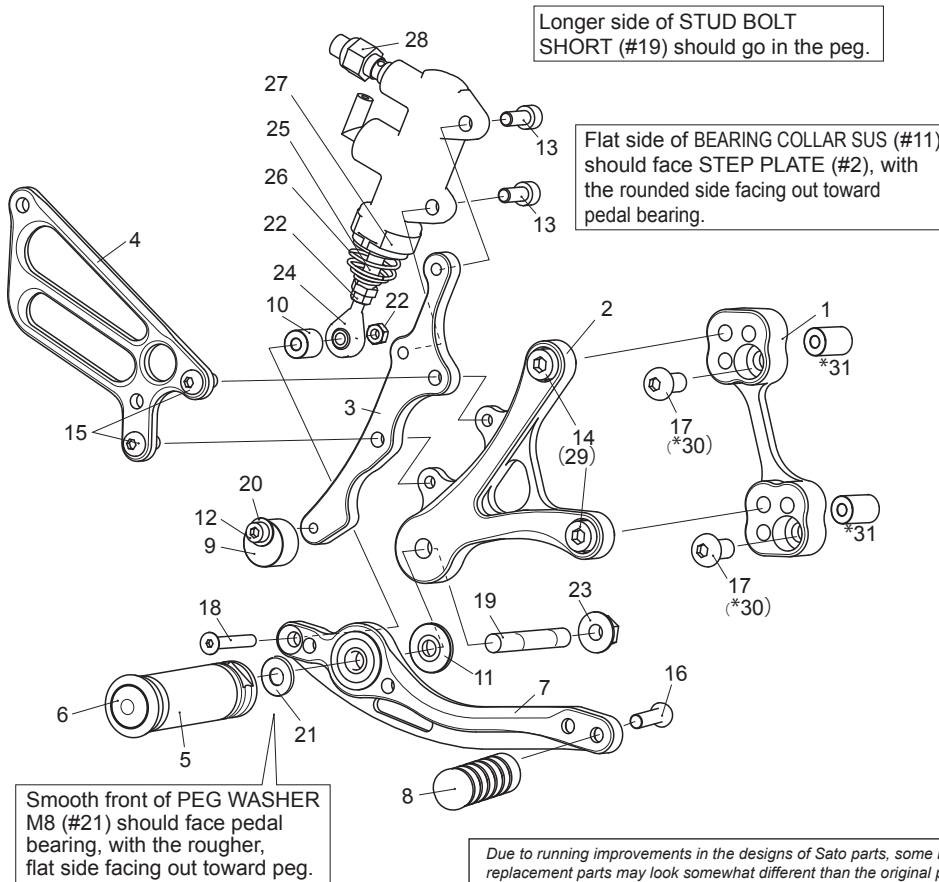
POSITIONS		
1	15mm Forward	15mm Up
2	15mm Forward	27mm Up
3	27mm Forward	27mm Up
4	27mm Forward	15mm Up

All measurements are in relation to stock position (0 mm)

1. BASE PLATE [L]
2. STEP PLATE [L]
3. HEEL GUARD [L](HG6)
4. FOOT PEG
5. FOOT PEG END CAP
6. SHIFT PEDAL 60-70(SPD0102)
7. PEDAL TIP DELRIN
8. SHIFT ROD 180
9. FOOT PEG BEARING COLLAR 10
10. ROD END COLLAR 3
11. SOCKET HEAD M6-20
12. SOCKET HEAD M8-15 x2
13. BUTTON HEAD M6-10 x2
14. BUTTON HEAD M6-20
15. BUTTON HEAD M8-15 x2
16. STUD BOLT LONG
17. FLANGE NUT M8
- \*18. NUT M6 (STOCK)
- \*19. REVERSE NUT M6(STOCK)
20. PEG WASHER M8
- \*21. MALE ROD END(STOCK)
- \*22. MALE REVERSE ROD END M6 (STOCK)
23. SOCKET HEAD M8-30 x2



**[R]** P-1.0 brake light switch included.



1. BASE PLATE [R]
  2. STEP PLATE [R]
  3. MASTER STAY
  4. HEEL GUARD [R](HG6)
  5. FOOT PEG
  6. FOOT PEG END CAP
  7. BRAKE PEDAL 180-2(BPD6)
  8. PEDAL TIP DELRIN
  9. PEDAL STOPPER DELRIN
  10. ROD END COLLAR 12 (BK)
  11. BEARING COLLAR SUS
  12. SOCKET HEAD M5-20
  13. SOCKET HEAD M6-15 x2
  14. SOCKET HEAD M8-15 x2
  15. BUTTON HEAD M6-20 x2
  16. BUTTON HEAD M6-20
  17. BUTTON HEAD M8-15 x2
  18. FLAT HEAD M5-35
  19. STUD BOLT SHORT
  20. WASHER M5
  21. PEG WASHER M8
  22. NUT M5 x2
  23. FLANGE NUT M8
  24. MALE ROD END M5
  25. PUSH ROD
  26. RETURN SPRING 20
  27. RETURN SPRING COLLAR(BK)
  28. BRAKE LIGHT SWITCH P-1.0
  29. SOCKET HEAD M8-30 x2
  - \*30. BUTTON HEAD M8-35 x2
  - \*31. COLLAR 20-8(BK) x2
- \* for gullarm swingarm models

Due to running improvements in the designs of Sato parts, some new replacement parts may look somewhat different than the original parts with the same part #. These slight differences are mostly cosmetic and have no effect on performance.