

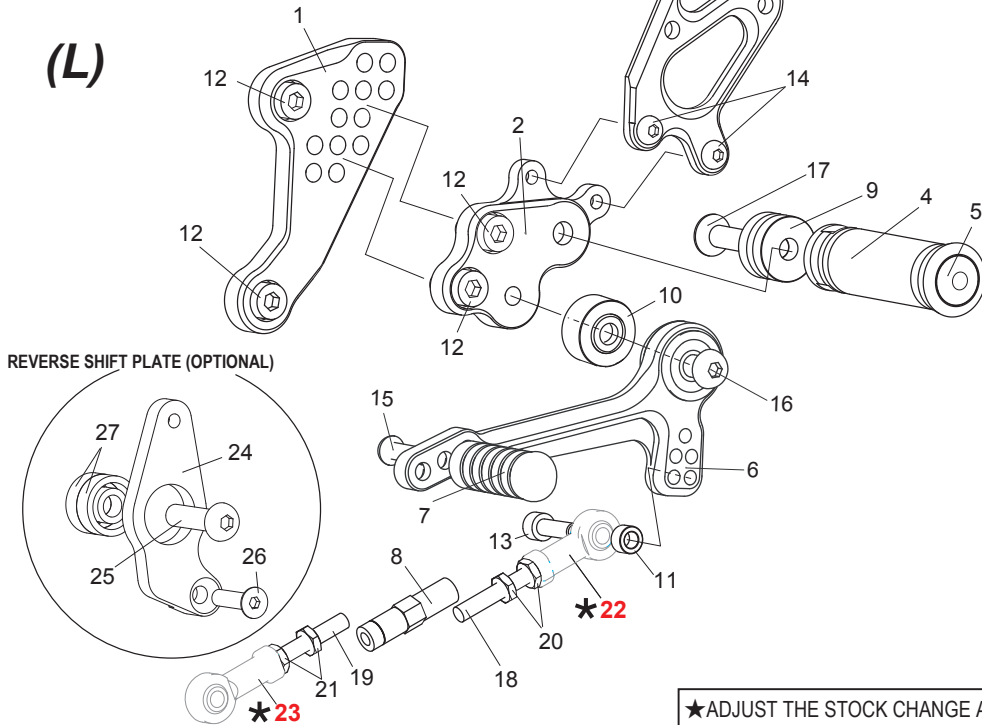
KTM 990 SUPER DUKE ('05-'12)

REAR SETS

part# KTM-990RS

Flat side of BEARING COLLAR 12.5 (#10) should face STEP PLATE(#2), with the stepped side facing out toward pedal bearing.

(L)



[L] SIDE

1. [L] BASE PLATE [KTM-990BP-L]
2. [L] STEP PLATE [KTM-990SP-L]
3. HEEL GUARD [L] [HG-19L]
4. FOOT PEG [PEG]
5. FOOT PEG END CAP [ST-002]
6. SHIFT PEDAL [SPD-0912]
7. PEDAL TIP (DELRIN) [ST-001D]
8. SHIFT ROD 40 [SRD-40]
9. FOOT PEG COLLAR 15 [PEGCLR-15]
10. FOOT PEG BEARING COLLAR 12.5
11. ROD END COLLAR 6 [RDED-CLR6]
12. SOCKET HEAD M8×15mm [SBT-M815] ×4
13. SOCKET HEAD M6×20mm [SBT-M620]
14. BUTTON HEAD M6×10mm [BBT-M610] ×2
15. BUTTON HEAD M6×20mm [BBT-M620]
16. BUTTON HEAD M8×35mm [BBT-M835]
17. FLAT HEAD M8×40mm [FBT-M840]
18. STUD M6 [STUD-M6]
19. REVERSE STUD M6 [STUD-M6L]
20. JAM NUT M6 [JNT-6] ×2
21. REVERSE JAM NUT M6 [JNT-6L] ×2
- ★ 22. FEMALE ROD END M6 (STOCK)
- ★ 23. FEMALE REVERSE ROD END M6 (STOCK)

(OPTIONAL PART)

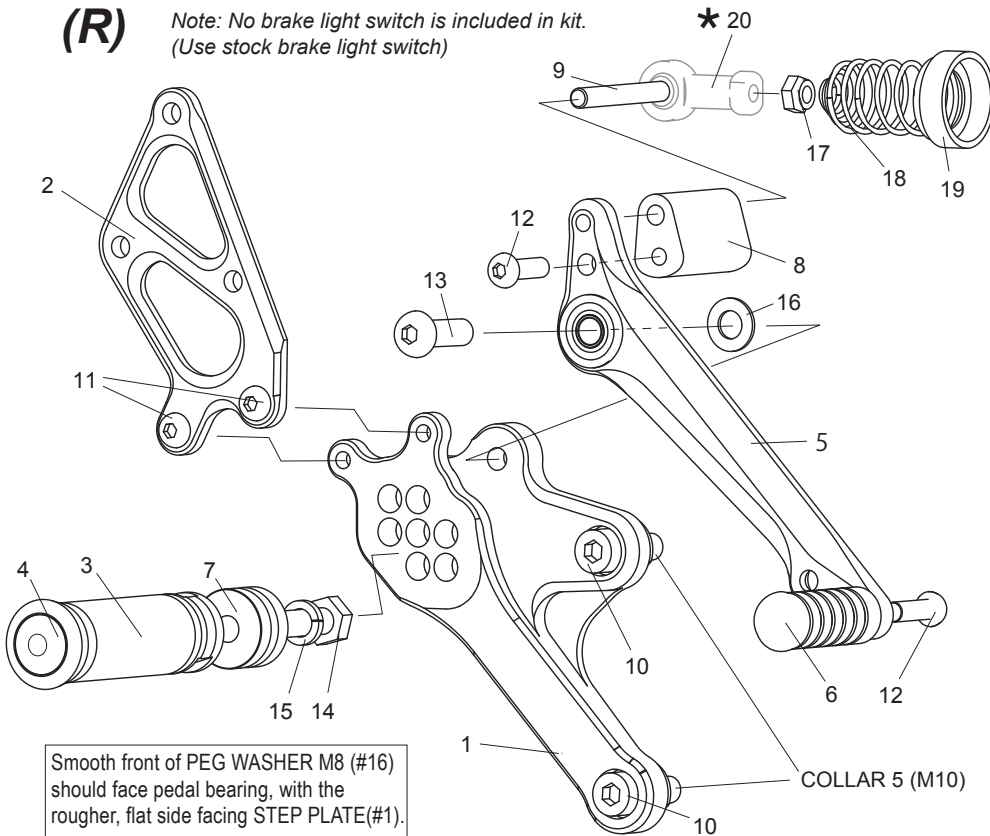
REVERSE SHIFT PLATE [KTM-990RS-RSP]

24. REVERSE PLATE
25. BUTTON HEAD M8×30mm [BBT-M830]
26. FLAT HEAD M6×20mm [FBT-M620]
27. BEARING ×2

★ADJUST THE STOCK CHANGE ARM WHEN INSTALLING SATO REAR SETS.
★USE THE STOCK SHIFT ROD FOR POSITION #1 AND #2.

(R)

Note: No brake light switch is included in kit.
(Use stock brake light switch)



[R] SIDE

1. STEP PLATE [R] [KTM-990SP-R]
2. HEEL GUARD [R] [HG-19R]
3. FOOT PEG [PEG]
4. FOOT PEG END CAP [ST-002]
5. BRAKE PEDAL [BPD-12]
6. PEDAL TIP (DELRIN) [ST-001D]
7. FOOT PEG COLLAR 15 [PEGCLR-15]
8. BRAKE ADAPTOR(BK) [BADP-KTM]
9. SOCKET HEAD M6×55mm [SBT-M655]
10. SOCKET HEAD M8×25mm [SBT-M825] ×2
11. BUTTON HEAD M6×10mm [BBT-M610] ×2
12. BUTTON HEAD M6×20mm [BBT-M620] ×2
13. BUTTON HEAD M8×25mm [BBT-M825]
14. HEX BOLT M8×40 [HBT-M840]
15. SPLIT WASHER M8 [SWS-8]
16. PEG WASHER M8 [PWS-8]
17. SPRING SEAT M6 [NUT-SPS6]
18. RETURN SPRING 40 [RS-RSP]
19. RETURN SPRING COLLAR (BK) [RS-RSCLR]
- ★ 20. FEMALE ROD END (STOCK)

POSITIONS		
1	20mm Forward	10mm Up
2	20mm Forward	20mm Up
3	10mm Forward	10mm Up
4	10mm Forward	20mm Up
5	10mm Forward	30mm Up
6	0mm	20mm Up
7	0mm	30mm Up

All measurements are in relation to stock position (0 mm)