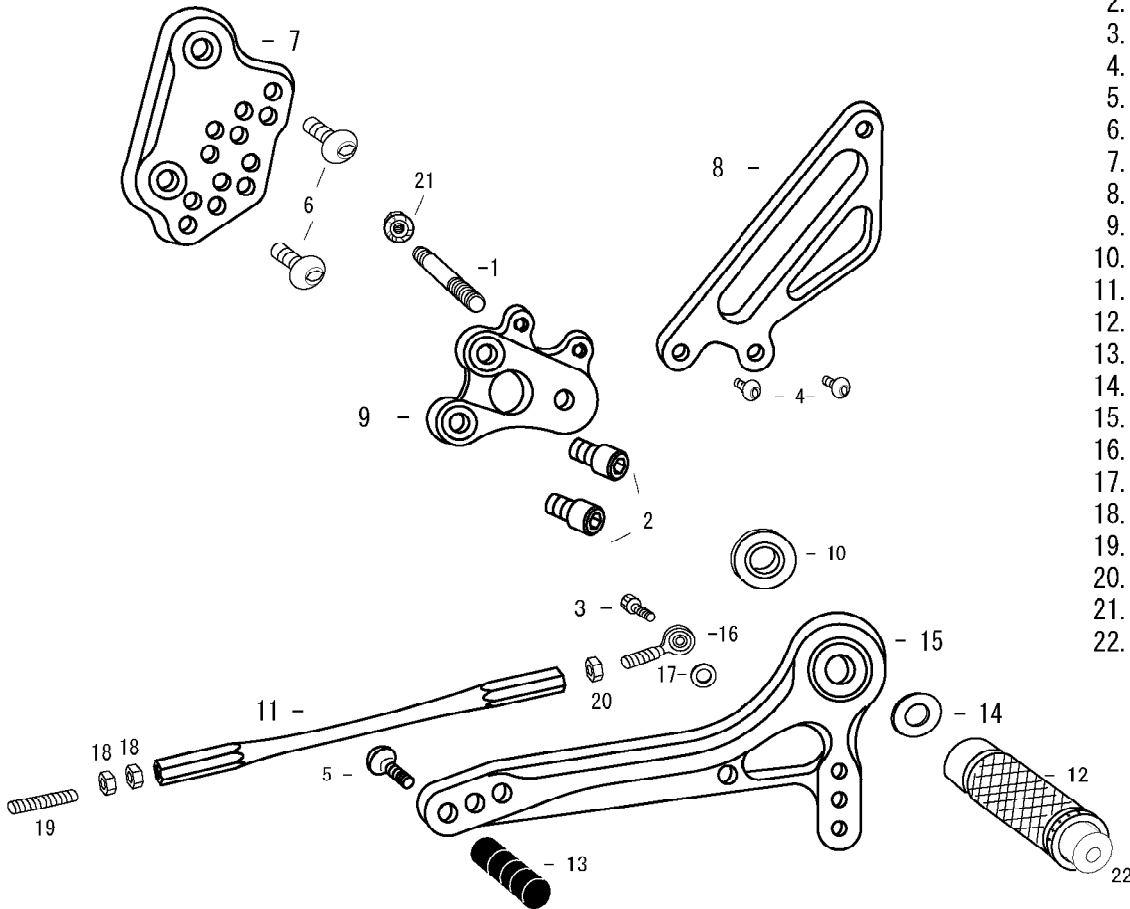


SV1000 (L)

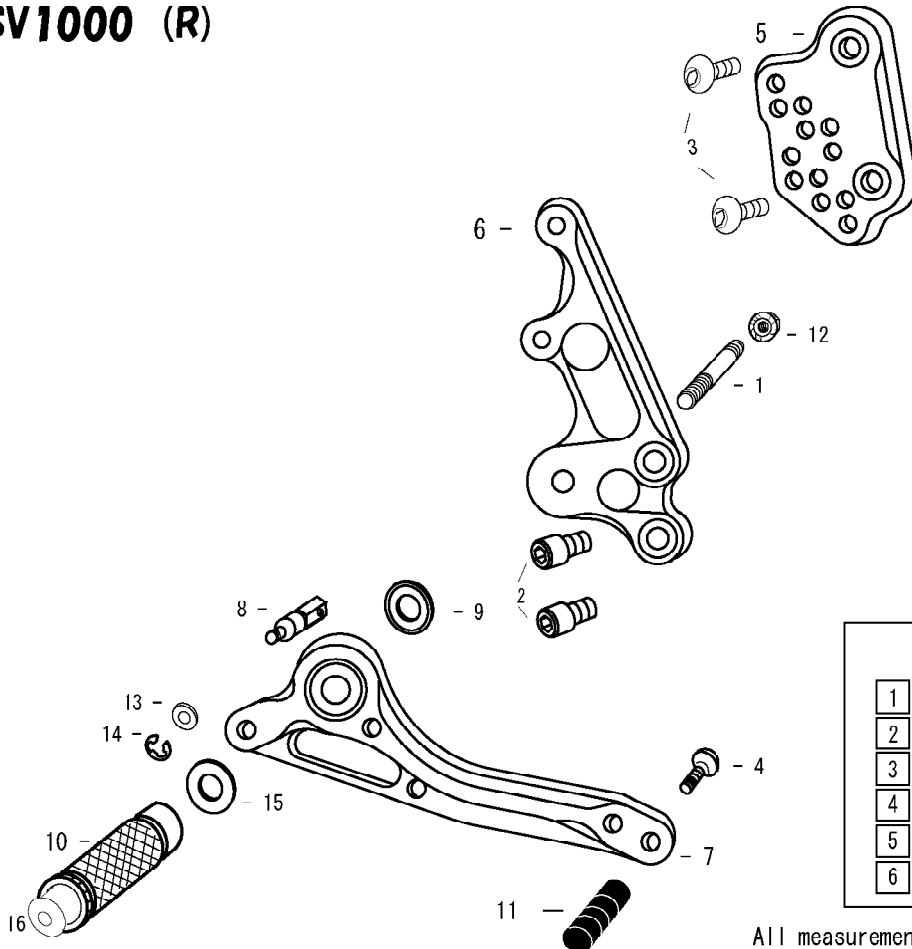


1. STUD BOLT SHORT
2. SOCKET HEAD M8×15mm ×2
3. SOCKET HEAD M6×20mm
4. BUTTON HEAD M6×10mm ×2
5. BUTTON HEAD M6×20mm
6. BUTTON HEAD M8×15mm ×2
7. BASE PLATE [L]
8. HEEL GUARD [L] (HG8)
9. STEP PLATE [L]
10. FOOT PEG BEARING COLLAR 5
11. SHIFT ROD 150
12. FOOT PEG
13. PEDAL TIP DELRIN
14. PEG WASHER M8
15. SHIFT PEDAL 70 (SPD2)
16. MALE REVERSE ROD END M6
17. ROD END COLLAR 3
18. JAM NUT M6 ×2
19. STUD M6
20. REVERSE JAM NUT M6
21. FLANGE NUT M8
22. FOOT PEG END CAP

※ADJUST THE STOCK CHANGE ARM WHEN INSTALLING SATO REAR SETS.



SV1000 (R)



1. STUD BOLT SHORT
2. SOCKET HEAD M8×15mm ×2
3. BUTTON HEAD M8×15mm ×2
4. BUTTON HEAD M6×25mm
5. BASE PLATE [R]
6. STEP PLATE [R]
7. BRAKE PEDAL 130 (BPD7)
8. BRAKE ROD M40
9. BEARING COLLAR SUS
10. FOOT PEG
11. PEDAL TIP DELRIN
12. FLANGE NUT M8
13. PLAIN WASHER M6
14. E CLIP M6
15. PEG WASHER M8
16. FOOT PEG END CAP

POSITIONS		
1	0mm	0mm
2	0mm	10mm Up
3	10mm Back	10mm Up
4	10mm Back	20mm Up
5	20mm Back	20mm Up
6	20mm Back	30mm Up

All measurements are in relation to stock position (0 mm)