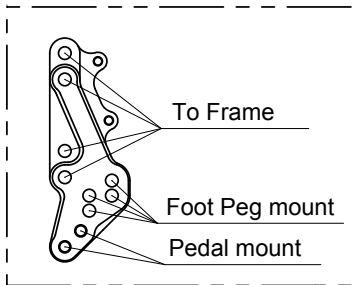




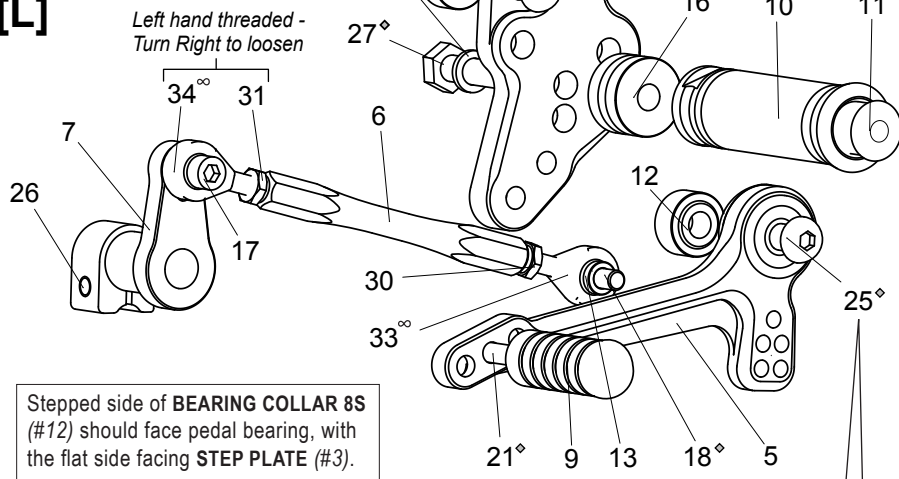
# Triumph Speed Triple 1050 ('11-'15\*)

## REAR SETS

part# T-ST11RS



[L]

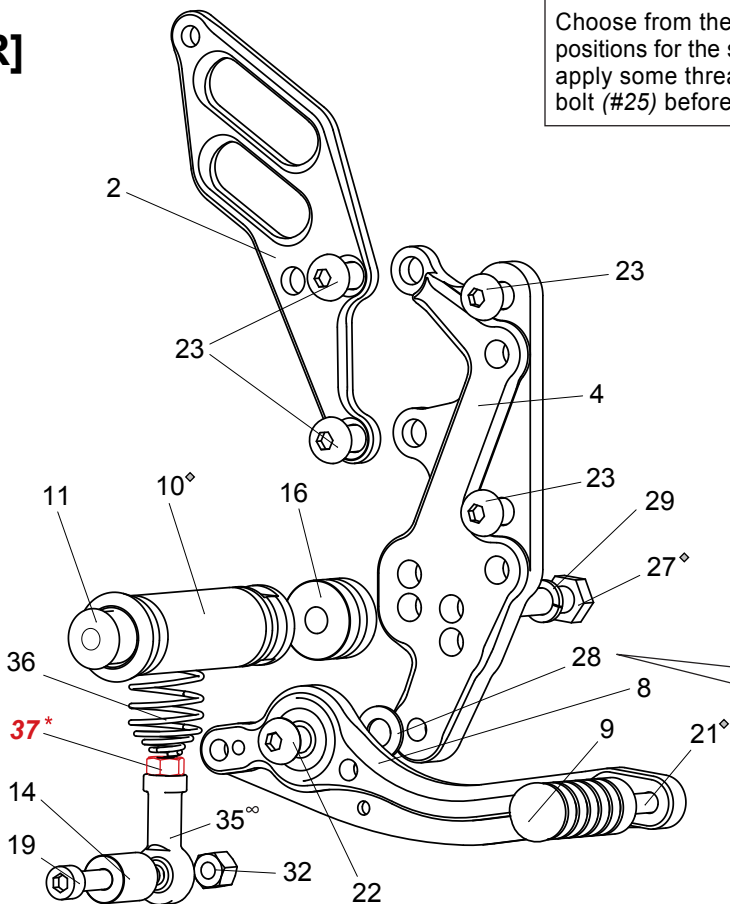


Stepped side of BEARING COLLAR 8S (#12) should face pedal bearing, with the flat side facing STEP PLATE (#3).

Choose from the two mounting positions for the shift pedal, then apply some threadlocker to the bolt (#25) before final tightening.

1. (L) HEEL GUARD [HG-11L]
  2. (R) HEEL GUARD [HG-16R]
  3. (L) STEP PLATE [T-ST11SP-L]
  4. (R) STEP PLATE [T-ST11SP-R]
  5. SHIFT PEDAL [SPD-0912]
  6. SHIFT ROD 100 [SRD-100]
  7. CHANGE ARM (BK) [CA-6]
  8. BRAKE PEDAL [BP165-30]
  9. PEDAL TIP (DELRIN) [ST-001D18] x 2
  10. FOOT PEG [PEG] x 2
  11. FOOT PEG END CAP [ST-002] x 2
  12. BEARING COLLAR 10S [PEGBGCLR-10SB]
  13. ROD END COLLAR 3 (GD) [RDEDCLR-3] x 2
  14. BRAKE ROD COLLAR 19(BK) [RDEDCLR-19]
  15. COLLAR 8-20 (BK) [BPCLR-8-20] x 2
  16. PEG COLLAR 15 [PEGCLR-15] x 2
  17. SOCKET HEAD M6×18mm [SBT-M618]
  18. SOCKET HEAD M6×20mm [SBT-M620]
  19. SOCKET HEAD M6×45mm [SBT-M645]
  20. BUTTON HEAD M6×10mm [BBT-M610] x 2
  21. BUTTON HEAD M6×20mm [BBT-M620] x 2
  22. BUTTON HEAD M8×25mm [BBT-M825]
  23. BUTTON HEAD M8×20mm [BBT-M820] x 4
  24. BUTTON HEAD M8×30mm [BBT-M830] x 2
  25. BUTTON HEAD M8×35mm [BBT-M835]
  26. FLANGE HEAD M6×20mm [FGBT-M620]
  27. HEX HEAD M8×40mm [HBT-M840] x 2
  28. PEG WASHER M8 [PWS-8]
  29. SPLIT WASHER M8 [SWS-8] x 2
  30. JAM NUT M6 [JNT-6]
  31. REVERSE JAM NUT M6 [JNT-6L]
  32. LOCK NUT M6 [LNT-6]
  33. MALE ROD END M6 [RDED-M6]
  34. MALE REVERSE ROD END M6 [RDED-M6L]
  35. FEMALE ROD END 6-M8 [RDED-F6-8]
  36. BRAKE RETURN SPRING 40 [RS-RSP]
- \*37. NUT (TRIUMPH PART)**

[R]



Smooth side of PEG WASHER M8 (#28) should face brake pedal bearings, with the rougher, flat side facing STEP PLATE (#4).

POSITIONS		
1	7.5mm Back	5mm Up
2	7.5mm Back	15mm Up
3	22.5mm Back	15mm Up
4	22.5mm Back	25mm Up
5	7.5mm Back	22.5mm Up
6	7.5mm Back	32.5mm Up
7	22.5mm Back	32.5mm Up
8	22.5mm Back	42.5mm Up

note: all measurements are in relation to the stock foot peg position (0 mm).

◇ Apply some threadlocker (such as Loctite or Vibra Tite) to these bolts before final tightening.

Pre-tightened parts such as the Brake Pedal have already been Loctited)

∞ Clean and lubricate rod end ball joints periodically.

\* For 2011 to some early-2016 Speed Triple, you can use the stock brake light switch. Not compatible with the redesigned brake switch found on most 2016-17 Speed Triples.