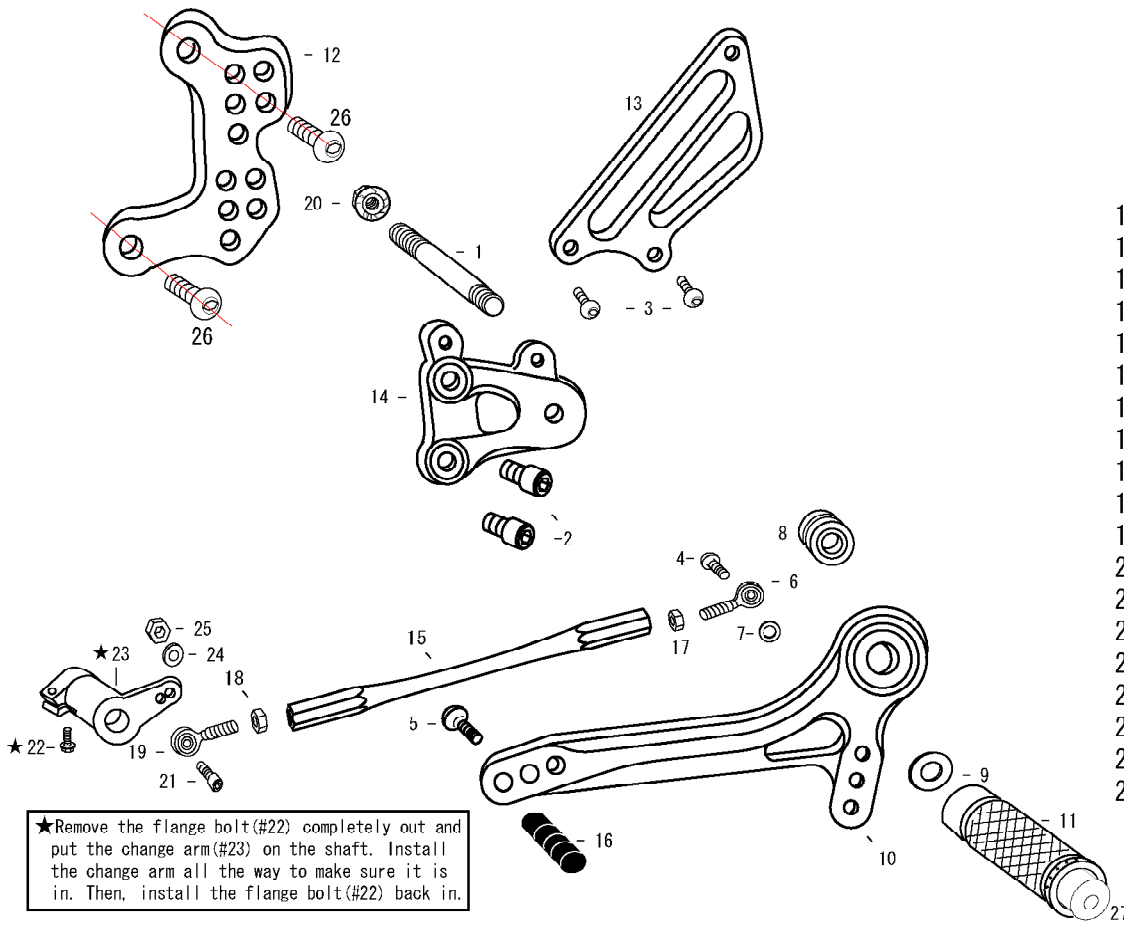


TRIUMPH T509/T595/955i (L)

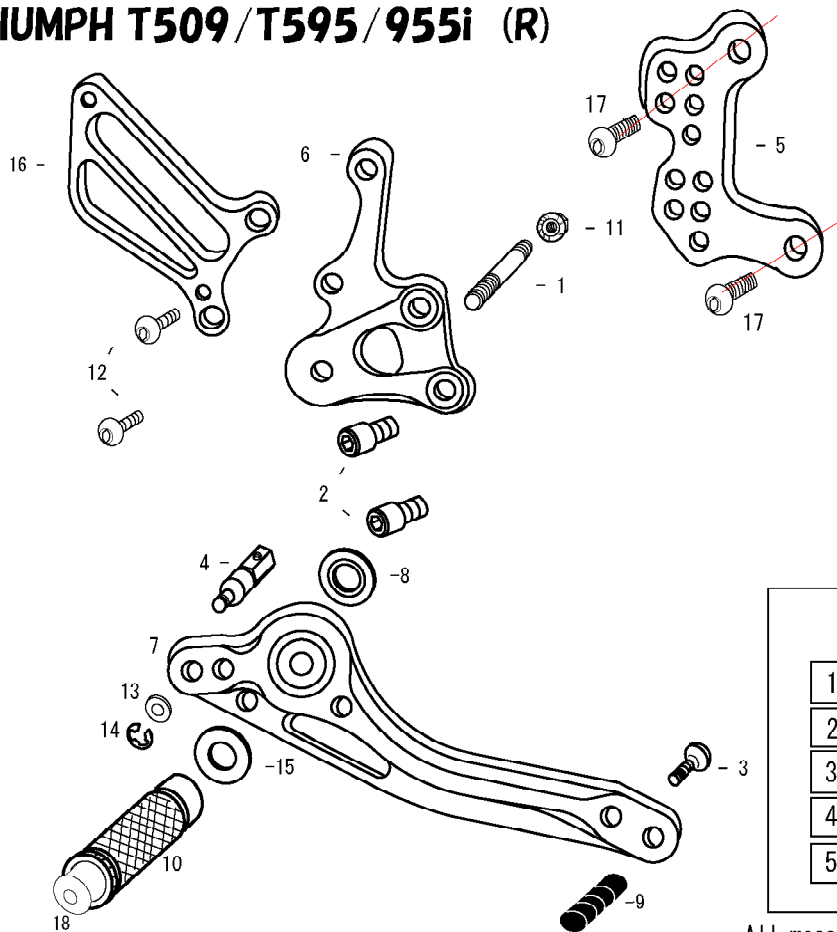


1. STUD BOLT LONG
2. SOCKET HEAD M8×15mm ×2
3. BUTTON HEAD M6×10mm ×2
4. BUTTON HEAD M6×20mm
5. BUTTON HEAD M6×20mm
6. MALE ROD END M6
7. ROD END COLLAR 3
8. FOOT PEG BEARING COLLAR 15
9. PEG WASHER M8
10. SHIFT PEDAL 60 (SPD1)
11. FOOT PEG
12. BASE PLATE [L]
13. HEEL GUARD [L] (HG2)
14. STEP PLATE [L]
15. SHIFT ROD 145 for T595
15. SHIFT ROD 180 for T509/955i
16. PEDAL TIP DELRIN
17. JAM NUT M6
18. REVERSE JAM NUT M6
19. MALE REVERSE ROD END M6
20. FLANGE NUT M8
21. SOCKET HEAD M6×25mm
22. FLANGE HEAD M6×20mm
23. CHANGE ARM L (BK)
24. PLAIN WASHER M6
25. PLAIN NUT M6
26. BUTTON HEAD M8×25mm ×2
27. FOOT PEG END CAP

★Remove the flange bolt(#22) completely out and put the change arm(#23) on the shaft. Install the change arm all the way to make sure it is in. Then, install the flange bolt(#22) back in.



TRIUMPH T509/T595/955i (R)



1. STUD BOLT SHORT
2. SOCKET HEAD M8×15mm ×2
3. BUTTON HEAD M6×25mm
4. BRAKE ROD M40
5. BASE PLATE [R]
6. STEP PLATE [R]
7. BRAKE PEDAL 150 (BPD1)
8. BEARING COLLAR SUS
9. PEDAL TIP DELRIN
10. FOOT PEG
11. FLANGE NUT M8
12. BUTTON HEAD M8×30mm ×2
13. PLAIN WASHER M6
14. E CLIP M6
15. PEG WASHER M8
16. HEEL GUARD [R] (HG9)
17. BUTTON HEAD M8×25mm ×2
18. FOOT PEG END CAP

POSITIONS		
1	0mm	0mm
2	0mm	10mm Up
3	0mm	20mm Up
4	10mm Back	10mm Up
5	10mm Back	20mm Up

All measurements are in relation to stock position (0 mm)