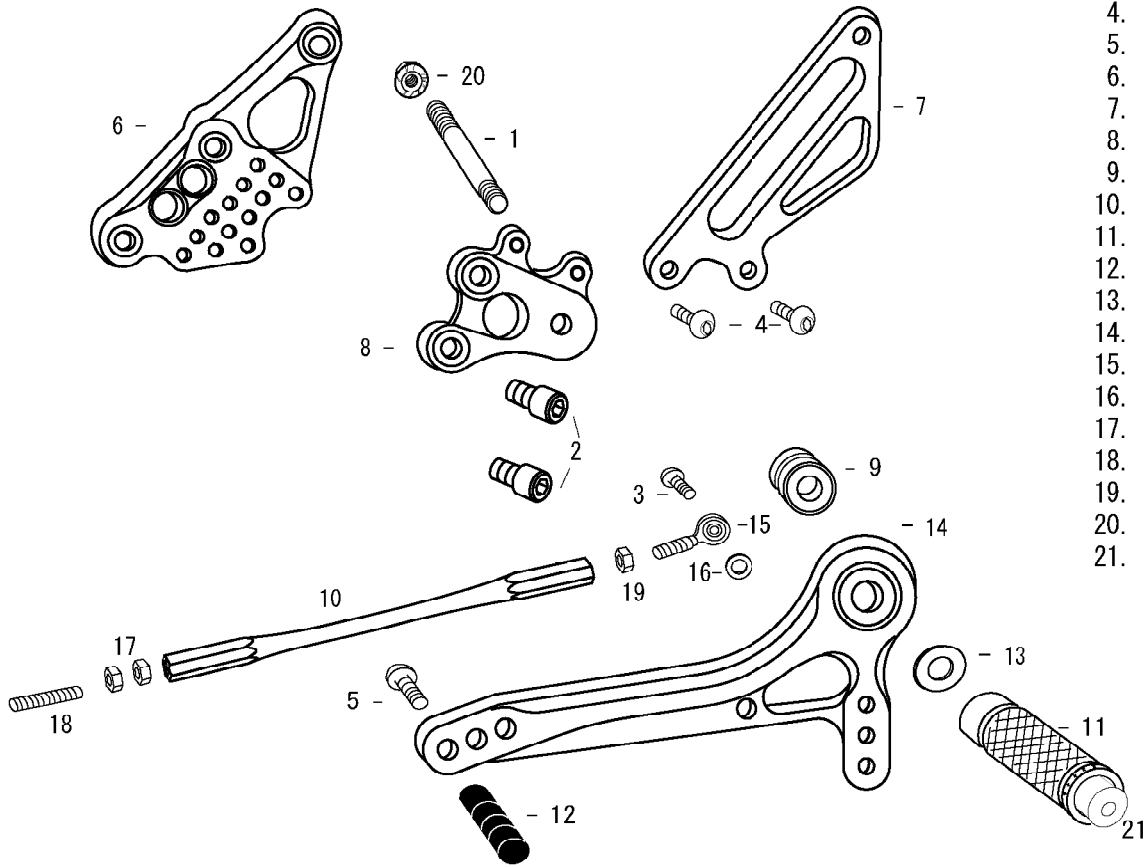


TL1000 R (L)

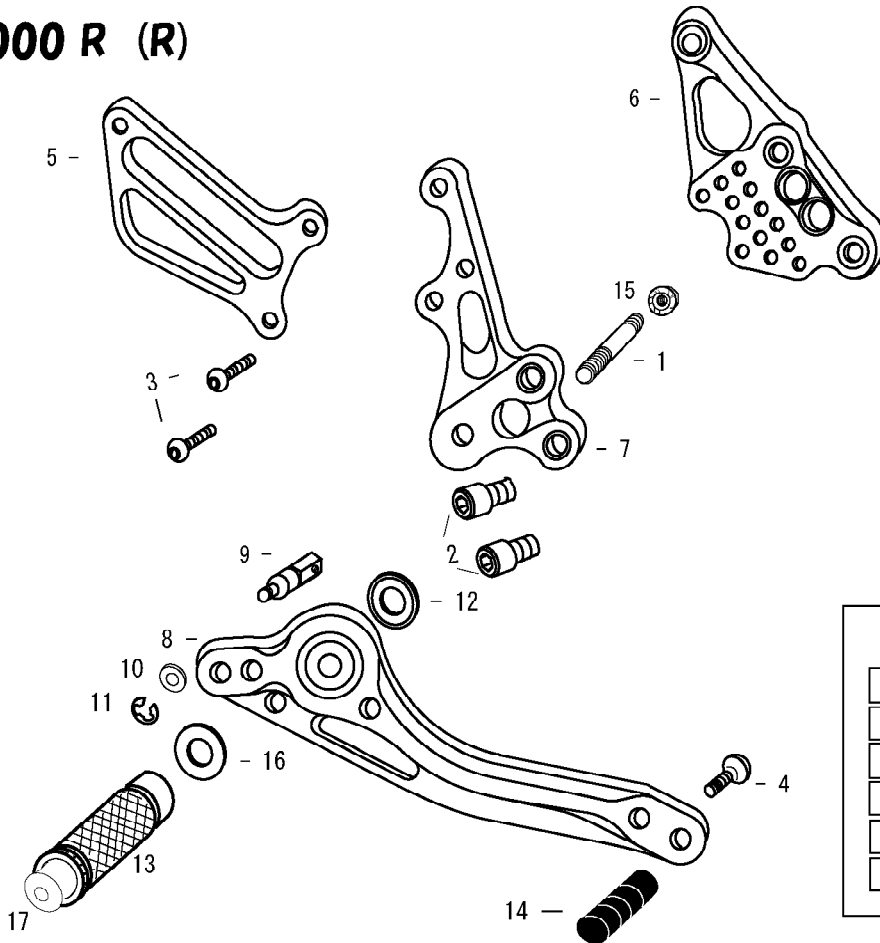


1. STUD BOLT LONG
2. SOCKET HEAD M8 × 15mm × 2
3. BUTTON HEAD M6 × 20mm
4. BUTTON HEAD M6 × 10mm × 2
5. BUTTON HEAD M6 × 20mm
6. BASE PLATE [L]
7. HEEL GUARD [L] (HG8)
8. STEP PLATE [L]
9. FOOT PEG BEARING COLLAR 15
10. SHIFT ROD 160
11. FOOT PEG
12. PEDAL TIP DELRIN
13. PEG WASHER M8
14. SHIFT PEDAL 70 (SPD2)
15. MALE REVERSE ROD END M6
16. ROD END COLLAR 3
17. JAM NUT M6 × 2
18. STUD M6
19. REVERSE JAM NUT M6
20. FLANGE NUT M8
21. FOOT PEG END CAP

※ADJUST THE STOCK CHANGE ARM WHEN INSTALLING SATO REAR SETS.



TL1000 R (R)



1. STUD BOLT SHORT
2. SOCKET HEAD M8 × 15mm × 2
3. BUTTON HEAD M6 × 25mm × 2
4. BUTTON HEAD M6 × 20mm
5. HEEL GUARD [R] (HG1)
6. BASE PLATE [R]
7. STEP PLATE [R]
8. BRAKE PEDAL 150 (BPD1)
9. BRAKE ROD M40
10. PLAIN WASHER M6
11. E CLIP M6
12. BEARING COLLAR SUS
13. FOOT PEG
14. PEDAL TIP DELRIN
15. FLANGE NUT M8
16. PEG WASHER M8
17. FOOT PEG END CAP

POSITIONS		
1	10mm Back	10mm Up
2	10mm Back	20mm Up
3	10mm Back	30mm Up
4	20mm Back	20mm Up
5	20mm Back	30mm Up
6	30mm Back	30mm Up

All measurements are in relation to stock position (0 mm)