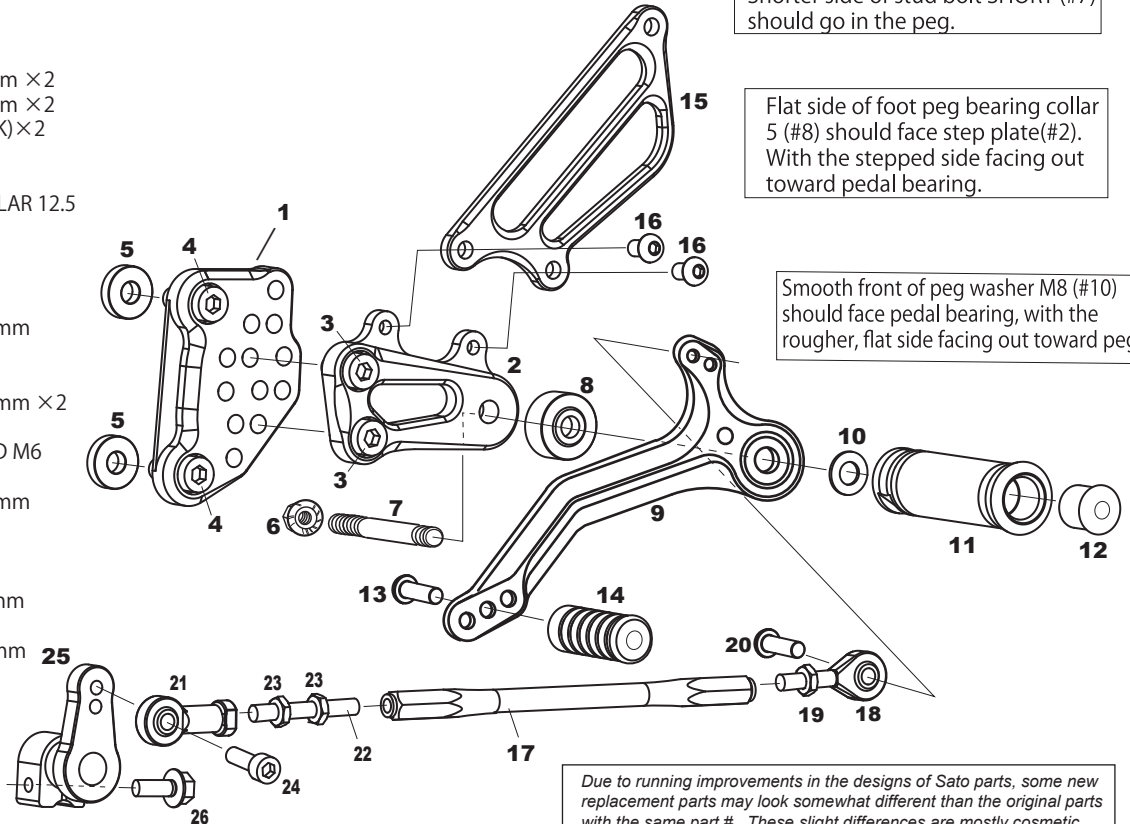


# VFR800 / Interceptor '02- REVERSE SHIFT REAR SETS (L)



- 1.BASE PLATE [L]
- 2.STEP PLATE [L]
- 3.SOCKET HEAD M8×15mm ×2
- 4.SOCKET HEAD M8×20mm ×2
- 5.BASE PLATE COLLAR 5(BK)×2
- 6.FLANGE NUT M8
- 7.STUD BOLT LONG
- 8.FOOT PEG BEARING COLLAR 12.5
- 9.SHIFT PEDAL (SPD5)
- 10.PEG WASHER M8
- 11.FOOT PEG
- 12.FOOT PEG END CAP
- 13.BUTTON HEAD M6×20mm
- 14.PEDAL TIP DELRIN
- 15.HEEL GUARD [L](HG2)
- 16.BUTTON HEAD M6×10mm ×2
- 17.SHIFT ROD 170
- 18.MALE REVERSE ROD END M6
- 19.REVERSE NUT M6
- 20.BUTTON HEAD M6×15mm
- 21.FEMALE ROD END M6
- 22.STUD M6
- 23.JAM NUT M6 ×2
- 24.SOCKET HEAD M6×20mm
- 25.CHANGE ARM (CA2,BK)
- 26.FLANGE HEAD M6×20mm



Shorter side of stud bolt SHORT (#7) should go in the peg.

Flat side of foot peg bearing collar 5 (#8) should face step plate(#2). With the stepped side facing out toward pedal bearing.

Smooth front of peg washer M8 (#10) should face pedal bearing, with the rougher, flat side facing out toward peg.

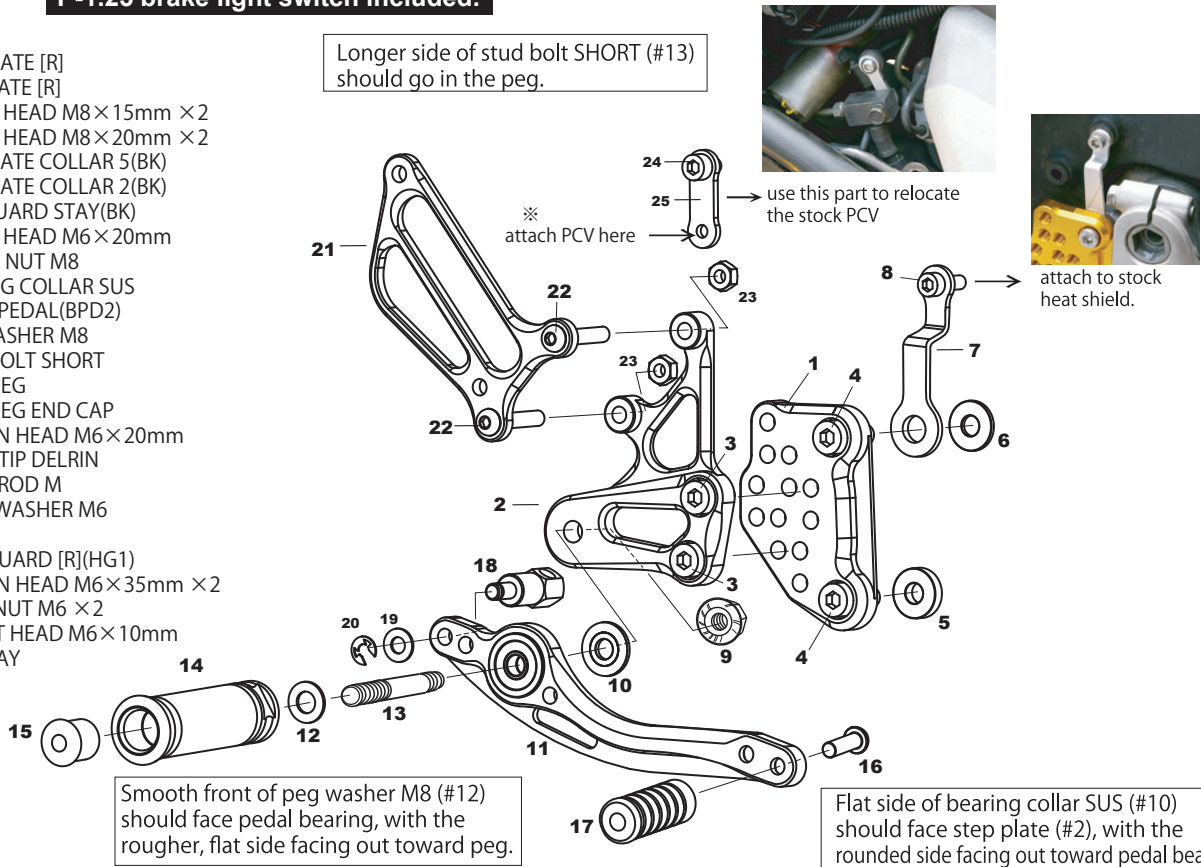
Due to running improvements in the designs of Sato parts, some new replacement parts may look somewhat different than the original parts with the same part #. These slight differences are mostly cosmetic and have no effect on performance.

## (R)

**P-1.25 brake light switch included.**

- 1.BASE PLATE [R]
- 2.STEP PLATE [R]
- 3.SOCKET HEAD M8×15mm ×2
- 4.SOCKET HEAD M8×20mm ×2
- 5.BASE PLATE COLLAR 5(BK)
- 6.BASE PLATE COLLAR 2(BK)
- 7.HEAT GUARD STAY(BK)
- 8.SOCKET HEAD M6×20mm
- 9.FLANGE NUT M8
- 10.BEARING COLLAR SUS
- 11.BRAKE PEDAL (BPD2)
- 12.PEG WASHER M8
- 13.STUD BOLT SHORT
- 14.FOOT PEG
- 15.FOOT PEG END CAP
- 16.BUTTON HEAD M6×20mm
- 17.PEDAL TIP DELRIN
- 18.BRAKE ROD M
- 19.PLAIN WASHER M6
- 20.E CLIP
- 21.HEEL GUARD [R](HG1)
- 22.BUTTON HEAD M6×35mm ×2
- 23.PLAIN NUT M6 ×2
- 24.SOCKET HEAD M6×10mm
- 25.PCV STAY

Longer side of stud bolt SHORT (#13) should go in the peg.



Smooth front of peg washer M8 (#12) should face pedal bearing, with the rougher, flat side facing out toward peg.

Flat side of bearing collar SUS (#10) should face step plate (#2), with the rounded side facing out toward pedal bearing.