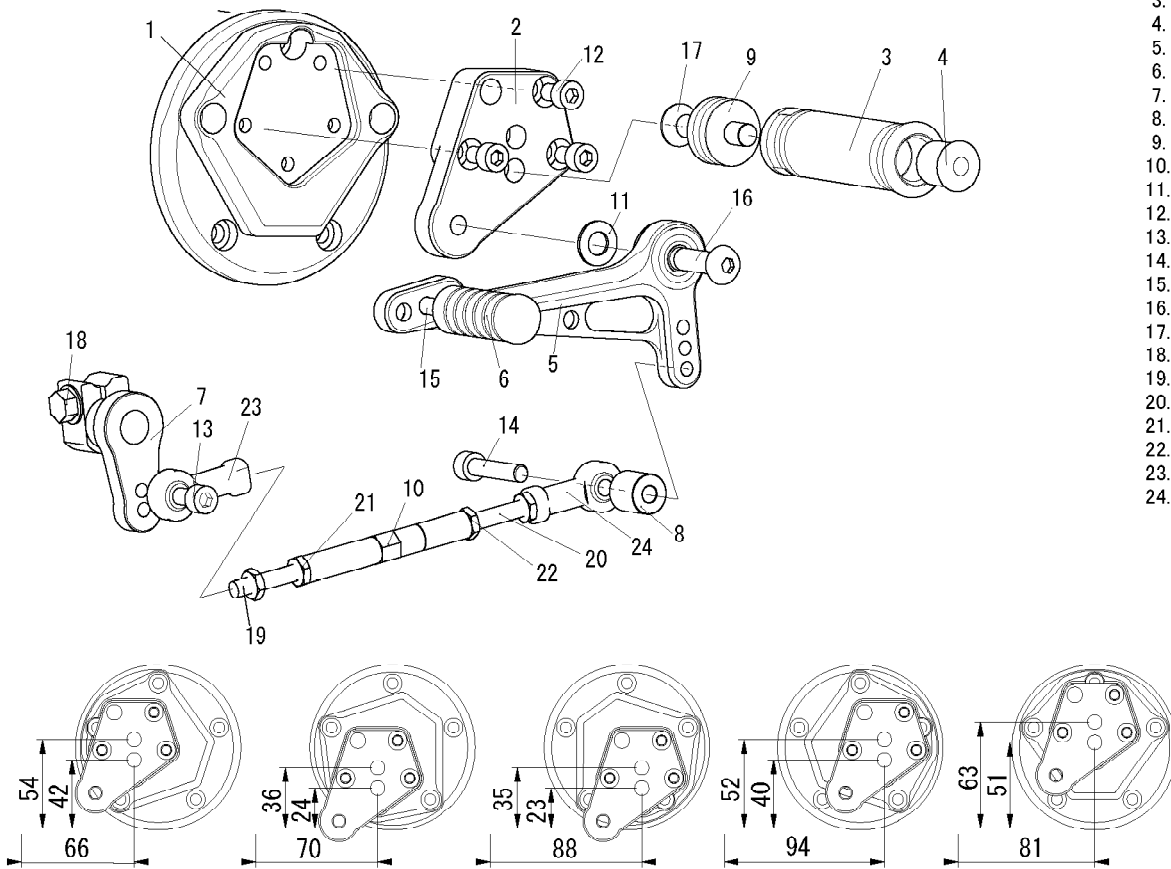
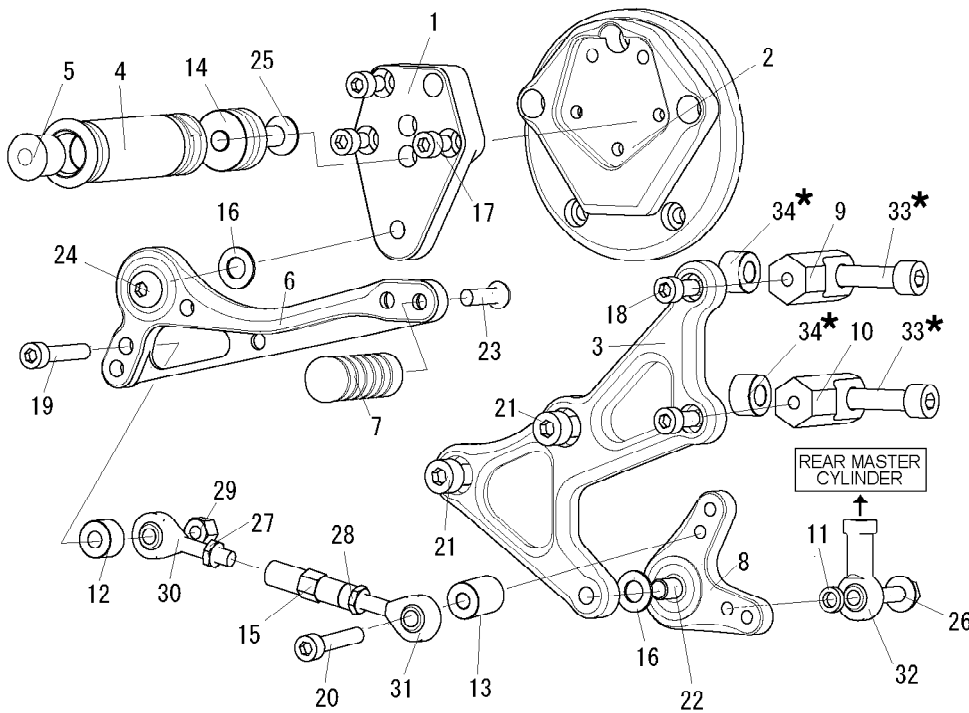


## VMAX 1700 '09 (L)



1. BASE PLATE
2. STEP PLATE [L]
3. FOOT PEG
4. FOOT PEG END CAP
5. SHIFT PEDAL SCP90 (SPD14)
6. PEDAL TIP DELRIN
7. CHANGE ARM S (BK)
8. ROD END COLLAR 15 (BK)
9. FOOT PEG COLLAR 12
10. SHIFT ROD 70
11. PEG WASHER M8
12. SOCKET HEAD M6 × 10mm × 3
13. SOCKET HEAD M6 × 15mm
14. SOCKET HEAD M6 × 30mm
15. BUTTON HEAD M6 × 20mm
16. BUTTON HEAD M8 × 25mm
17. FLAT HEAD M8 × 45mm
18. FLANGE HEAD M6 × 20mm
19. STUD M6 × 45mm
20. REVERSE STUD M6 × 45mm
21. JAM NUT M6 × 2
22. REVERSE JAM NUT M6 × 2
23. FEMALE ROD END M6
24. FEMALE REVERSE ROD END M6

## VMAX 1700 '09 (R)



1. STEP PLATE [R]
2. BASE PLATE
3. MASTER STAY (BK)
4. FOOT PEG
5. FOOT PEG END CAP
6. BRAKE PEDAL 105 (BPD4)
7. PEDAL TIP DELRIN
8. V LINK (BK)
9. MASTER CYLINDER STAY 37 (BK)
10. MASTER CYLINDER STAY 33 (BK)
11. ROD END COLLAR 3 (GD)
12. ROD END COLLAR 6 (GD)
13. ROD END COLLAR 19 (BK)
14. FOOT PEG COLLAR 15
15. SHIFT ROD 40
16. PEG WASHER M8 × 2
17. SOCKET HEAD M6 × 10mm × 3
18. SOCKET HEAD M6 × 15mm × 2
19. SOCKET HEAD M6 × 30mm
20. SOCKET HEAD M6 × 35mm
21. SOCKET HEAD M8 × 15mm
22. SOCKET HEAD M8 × 25mm
23. BUTTON HEAD M6 × 20mm
24. BUTTON HEAD M8 × 25mm
25. FLAT HEAD M8 × 45mm
26. FLANGE HEAD M6 × 20mm
27. JAM NUT M6
28. REVERSE JAM NUT M6
29. LOCK NUT M6
30. MALE ROD END M6
31. MALE REVERSE ROD END M6
32. FEMALE ROD END 6-M8
- \* 33. SOCKET HEAD M8 × 30mm (STOCK PARTS)
- \* 34. COLLAR 10 (STOCK PARTS)

※CANNOT USE RETURN SPRING WITH OUR REAR SETS