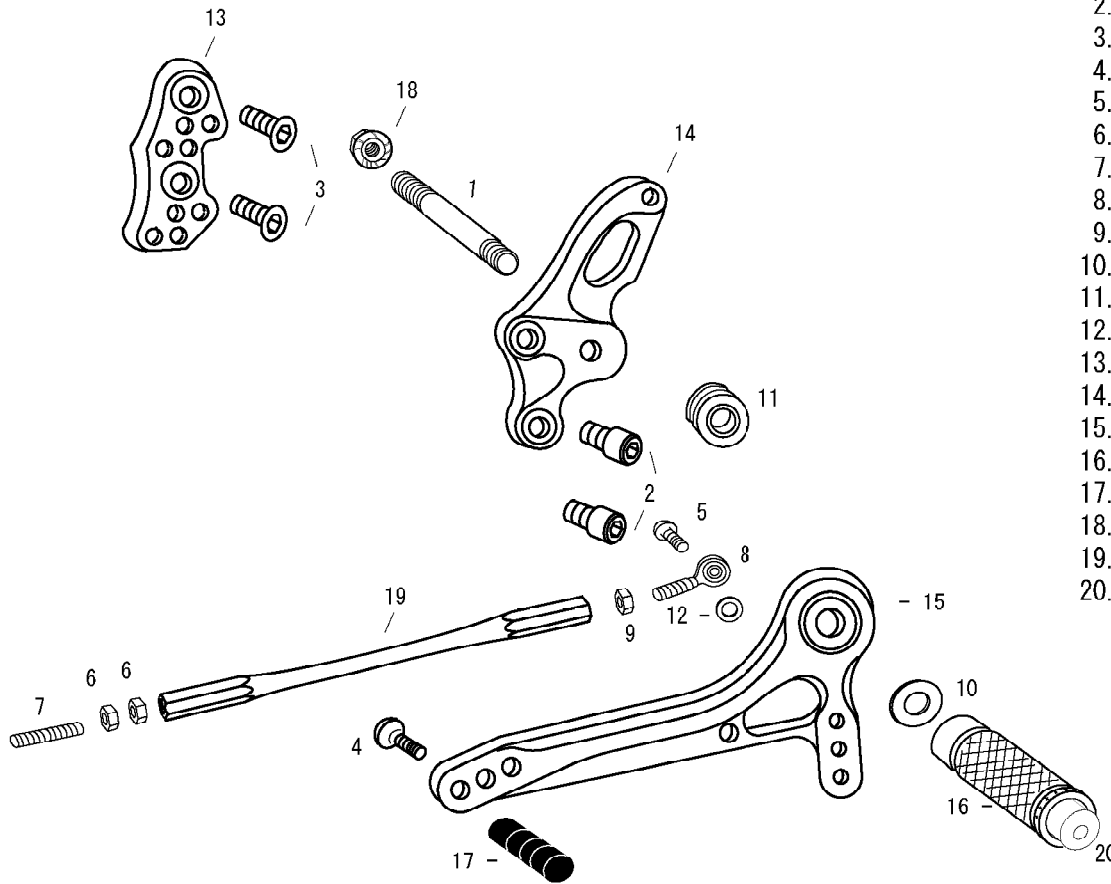


XJR1200/1300 (L)



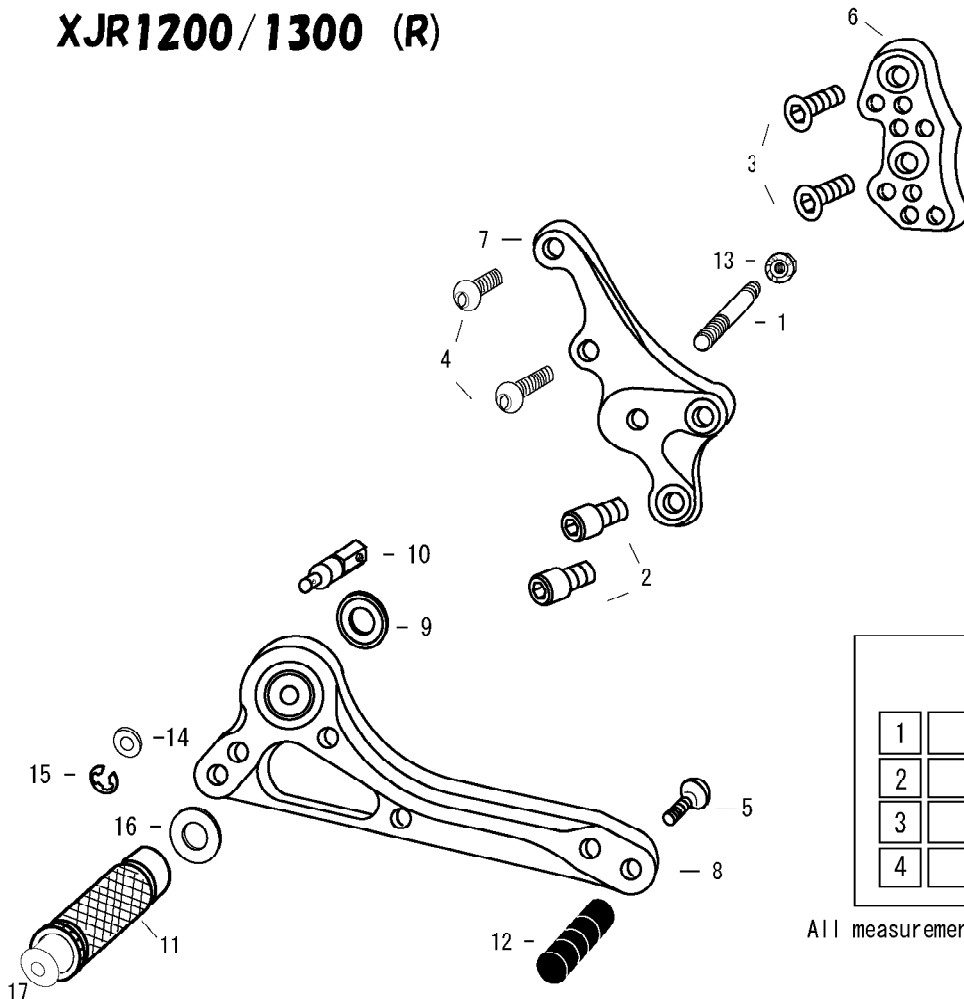
1. STUD BOLT LONG
2. SOCKET HEAD M8 × 15mm × 2
3. FLAT HEAD M8 × 20mm × 2
4. BUTTON HEAD M6 × 20mm
5. BUTTON HEAD M6 × 20mm
6. JAM NUT M6 × 2
7. STUD M6
8. MALE REVERSE ROD END M6
9. REVERSE JAM NUT M6
10. PEG WASHER M8
11. FOOT PEG BEARING COLLAR 15
12. ROD END COLLAR 3
13. BASE PLATE [L] (BK)
14. STEP PLATE [L]
15. SHIFT PEDAL 70 (SPD2)
16. FOOT PEG
17. PEDAL TIP DELRIN
18. FLANGE NUT M8
19. SHIFT ROD 160
20. FOOT PEG END CAP



※ADJUST THE STOCK CHANGE ARM WHEN INSTALLING SATO REAR SETS.

※SOME MODIFICATIONS REQUIRED FOR THE KICKSTAND.

XJR1200/1300 (R)



1. STUD BOLT SHORT
2. SOCKET HEAD M8 × 15mm × 2
3. FLAT HEAD M8 × 20mm × 2
4. BUTTON HEAD M8 × 20mm × 2
5. BUTTON HEAD M6 × 25mm
6. BASE PLATE [R] (BK)
7. STEP PLATE [R]
8. BRAKE PEDAL 90 (BPD5)
9. BEARING COLLAR SUS
10. BRAKE ROD M40
11. FOOT PEG
12. PEDAL TIP DELRIN
13. FLANGE NUT M8
14. PLAIN WASHER M6
15. E CLIP M6
16. PEG WASHER M8
17. FOOT PEG END CAP

POSITIONS

1	30mm Back	40mm Up
2	40mm Back	40mm Up
3	40mm Back	50mm Up
4	50mm Back	50mm Up

All measurements are in relation to stock position (0 mm)