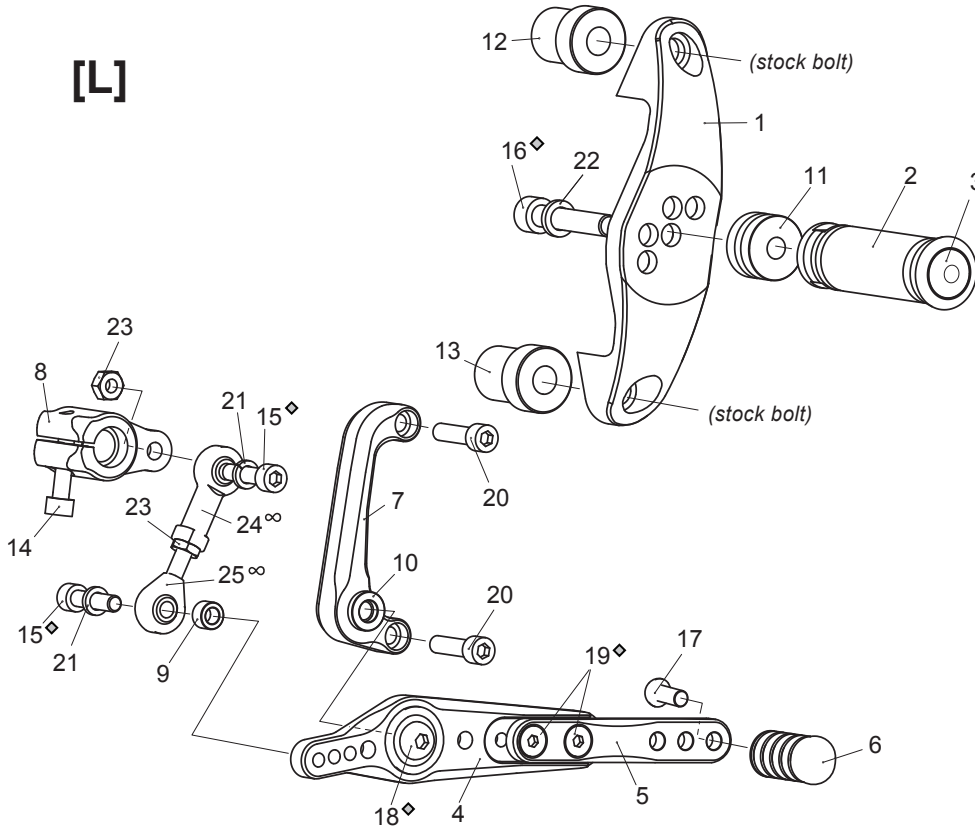


[L]

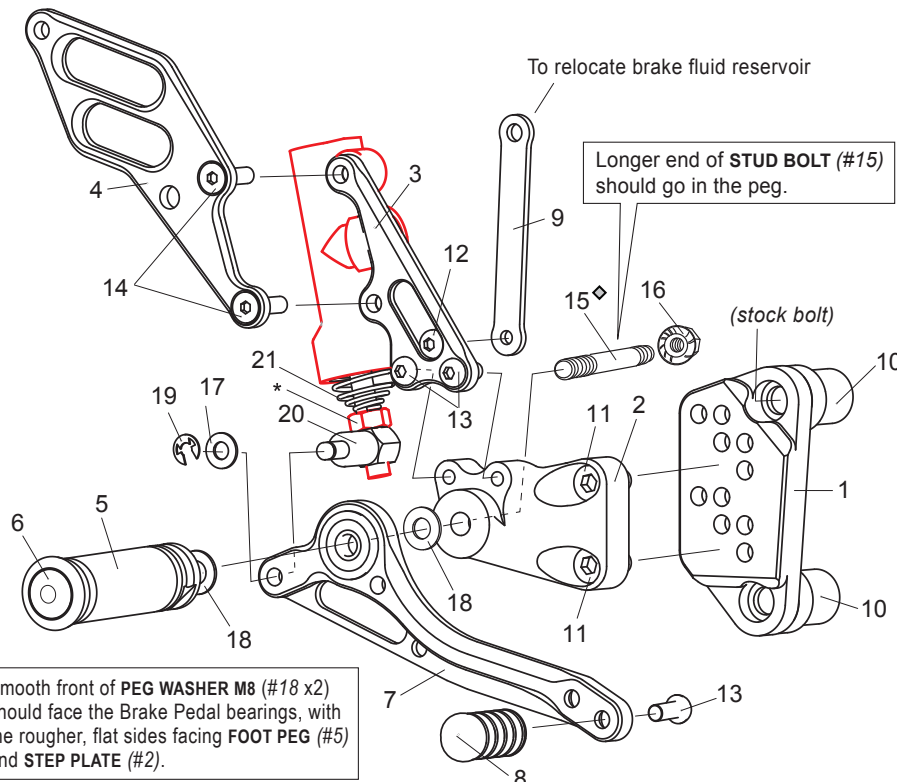


[L]-SIDE

1. (L) STEP PLATE [HD-XR1209SP-L]
2. FOOT PEG [PEG]
3. FOOT PEG END CAP [ST-002]
4. SHIFT PEDAL [SPD-XR1209]
5. SHIFT PEDAL EXTENSION (BK) [SPD-8B]
6. PEDAL TIP (DELRIN) *SHORT* [ST-001DS]
7. SHIFT BASE [SB-HD2]
8. CHANGE ARM [CA-HD]
9. ROD END COLLAR 6 (GD) [RDED-CLR6]
10. COLLAR 3 (BK) [CLR3-8]
11. FOOT PEG COLLAR 15 [PEGCLR-15]
12. COLLAR 30
13. COLLAR 32
14. SOCKET HEAD M6×20mm [SBT-M620]
15. SOCKET HEAD M6×25mm [SBT-M625] ×2
16. SOCKET HEAD M8×40mm [SBT-M840]
17. BUTTON HEAD M6×15mm BBT-M615]
18. BUTTON HEAD M8×30mm [BBT-M830]
19. FLAT HEAD M6×12mm [FBT-M612] ×2
20. (1/4-20) 1 INCH BOLT [INBT-1/4-1] ×2
21. SPLIT WASHER M6 [SWS-6] ×2
22. SPLIT WASHER M8 [SWS-8]
23. PLAIN NUT M6 [NUT-6] ×2
24. FEMALE ROD END M6 [RDED-F6]
25. MALE ROD END M6 [RDED-M6]

[R]

(Use stock brake light switch)



[R]-SIDE

1. (R) BASE PLATE (BK) [HD-XR1209BP-R]
2. (R) STEP PLATE [HD-XR1209SP-R]
3. MASTER STAY [HD-XR1209MS]
4. (R) HEEL GUARD [HG-16R]
5. FOOT PEG [PEG]
6. FOOT PEG END CAP [ST-002]
7. BRAKE PEDAL [BPD-13]
8. PEDAL TIP (DELRIN) *SHORT* [ST-001DS]
9. BRACKET M6-75mm (BK) [UB-M675-B]
10. COLLAR 32 ×2
11. SOCKET HEAD M8×15mm [SBT-M815] ×2
12. BUTTON HEAD M6×10mm [BBT-M610]
13. BUTTON HEAD M6×15mm [BBT-M615] ×3
14. FLAT HEAD M6×20mm [FBT-M620] ×2
15. STUD BOLT *SHORT* (M8×55mm) [STBT-S]
16. FLANGE NUT M8 [FNT-8]
17. PLAIN WASHER M6 [WS-6]
18. PEG WASHER M8 [PWS-8] ×2
19. E CLIP M6 [ECP-6]
20. BRAKE ROD M40 [BRD-M40]
21. RETURN SPRING 40 [RS-RSP]

\*STOCK NUT

POSITIONS

	0mm Back	10mm Up
1	0mm Back	10mm Up
2	0mm Back	20mm Up
3	10mm Back	20mm Up
4	10mm Back	30mm Up
5	20mm Back	30mm Up

All measurements are in relation to stock position (0 mm)

◇ Threadlocker (such as Loctite or Vibra Tite) should be applied to these bolts before tightening. (Factory pre-tightened parts have already been Loctited).

∞ Clean and lubricate rod end ball joints periodically.