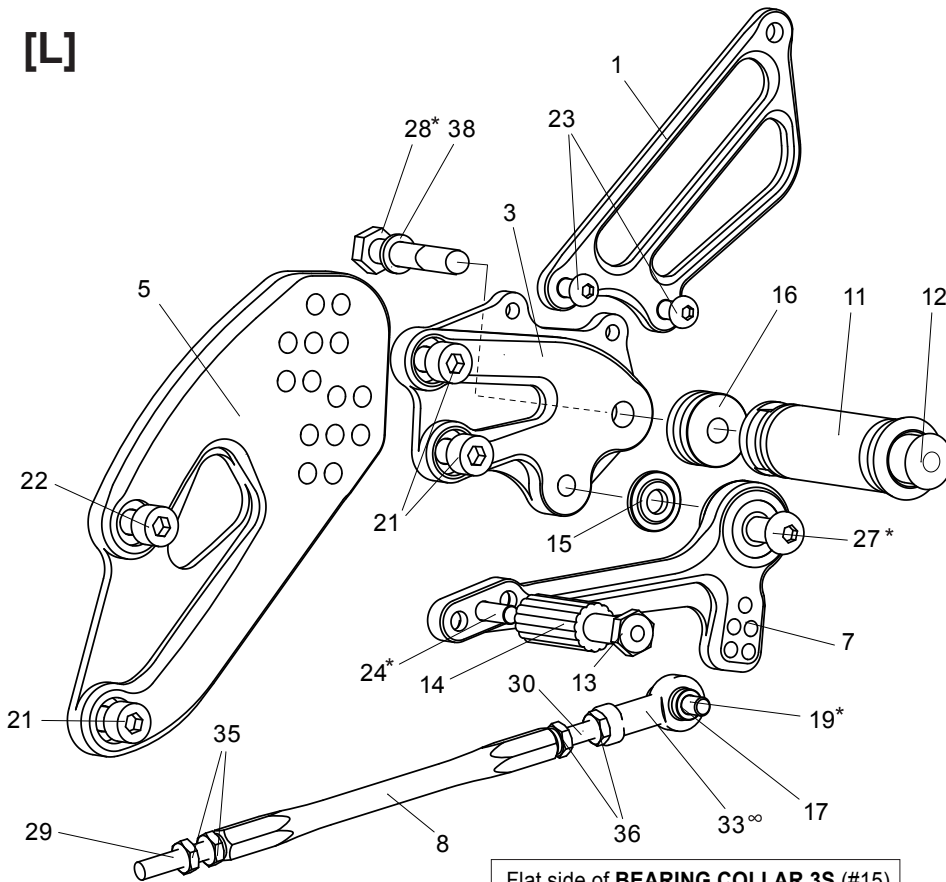


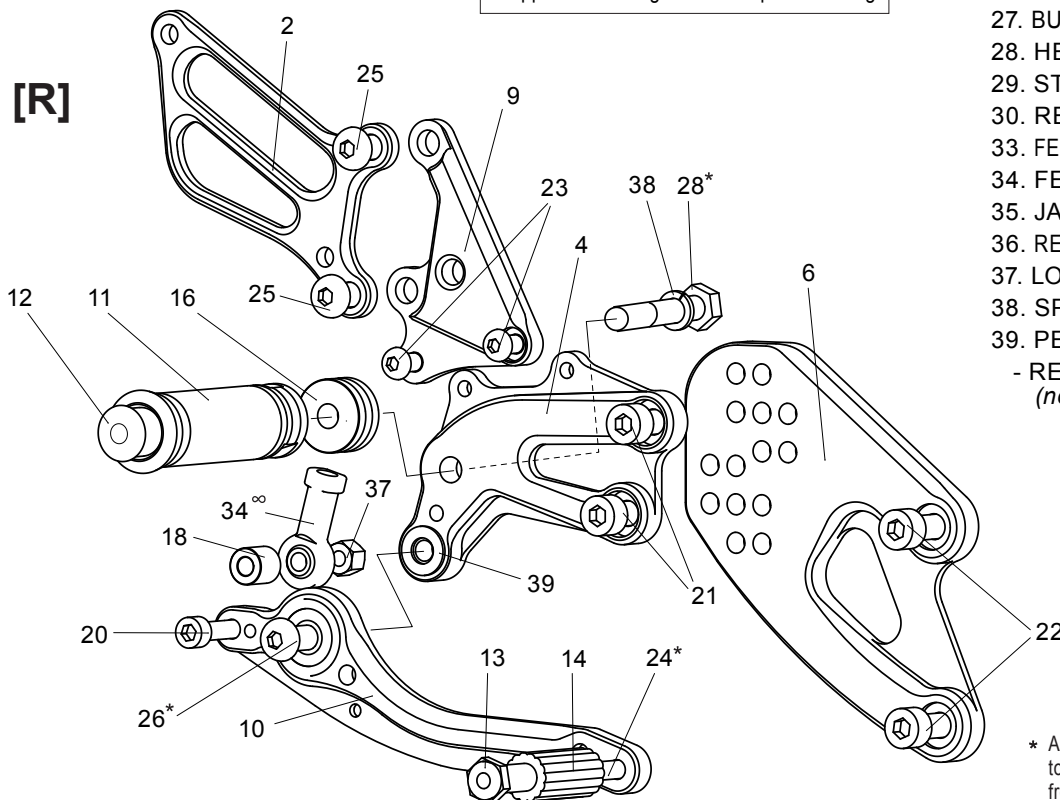
[L]



Flat side of BEARING COLLAR 3S (#15) should face (L) STEP PLATE (#3), with the stepped side facing out toward pedal bearing.

1. (L) HEEL GUARD [HG-2L]
  2. (R) HEEL GUARD [HG-9R]
  3. (L) STEP PLATE [K-ZX613SP-L]
  4. (R) STEP PLATE [S-GSX109RCSP-R]
  5. (L) BASE PLATE (BK) [Y-R3RCBP-LB]
  6. (R) BASE PLATE (BK) [Y-R3RCBP-RB]
  7. SHIFT PEDAL [SPD-0912]
  8. SHIFT ROD 135 (BK) [SRD-135B]
  9. MASTER STAY [Y-R3RCMS]
  10. BRAKE PEDAL [BPD165-30]
  11. FOOT PEG [PEG] x 2
  12. FOOT PEG END CAP [ST-002] x 2
  13. PEDAL TIP (ALUM)(GD) [ST-001RG] x 2
  14. RUBBER SLEEVE [ST-001R-SL] x 2
  15. BEARING COLLAR 3S(BK) [PEGBGCLR-3SB]
  16. PEG COLLAR 12 (GD) [PEGCLR-12] x 2
  17. ROD END COLLAR 3 (GD) [RDED-CLR3]
  18. COLLAR 12-6 (BK) [RDED-CLR12]
  19. SOCKET HEAD M6x20mm [SBT-M620]
  20. SOCKET HEAD M6x40mm [SBT-M640]
  21. SOCKET HEAD M8x15mm [SBT-M815] x 5
  22. SOCKET HEAD M8x20mm [SBT-M820] x 3
  23. BUTTON HEAD M6x10mm [BBT-M610] x 4
  24. BUTTON HEAD M6x20mm [BBT-M620] x 2
  25. BUTTON HEAD M8x20mm [BBT-M820] x 2
  26. BUTTON HEAD M8x25mm [BBT-M825]
  27. BUTTON HEAD M8x30mm [BBT-M830]
  28. HEX BOLT M8x40mm [HBT-M840] x 2
  29. STUD M6 [STUD-M6]
  30. REVERSE STUD M6 [STUD-M6L]
  33. FEMALE REVERSE ROD END M6 [RDED-F6L]
  34. FEMALE ROD END M6-8 [RDED-F6-8]
  35. JAM NUT M6 [JNT-6] x 2
  36. REVERSE JAM NUT M6 [JNT-6L] x 2
  37. LOCK NUT M6 [LNT-6]
  38. SPLIT WASHER M8 [SWS-8] x 2
  39. PEG WASHER M8 [PWS-8]
- RETURN SPRING 40 [RS-RSP] (not pictured)

[R]



\* Apply some threadlocker (Loctite, Vibra Tite or similar) to these bolts. This will help keep the rear sets parts from working their way loose during use. (Some pre-assembled parts have already been Loctite'd)

∞ Lubricate rod ends regularly