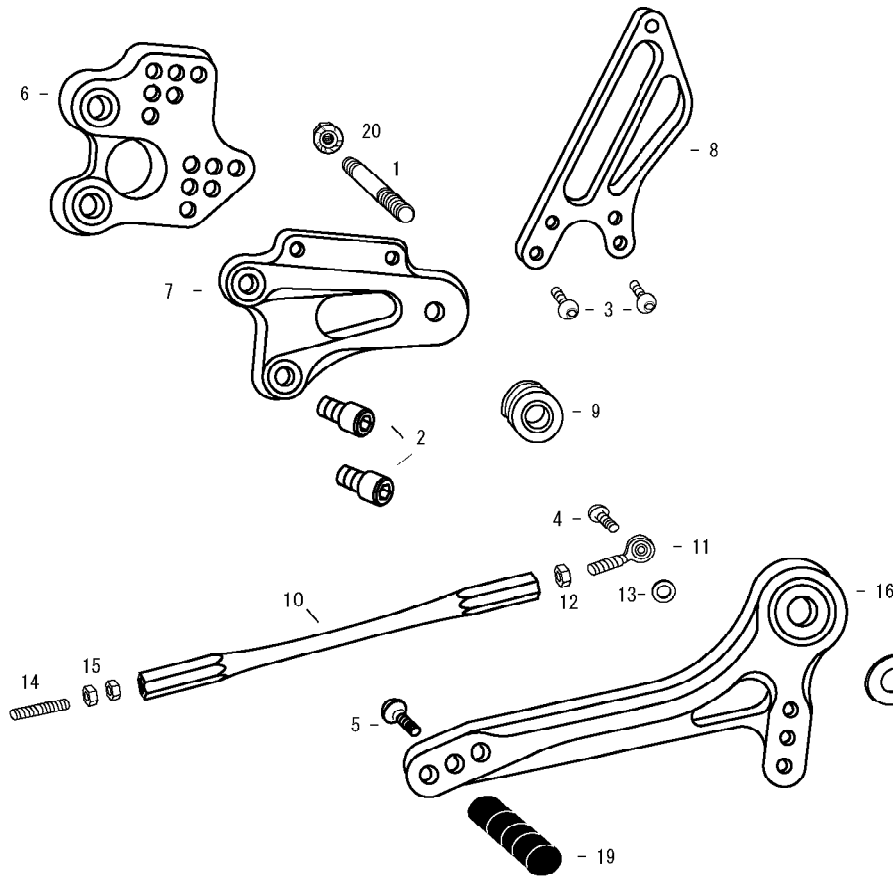


ZX-10R '04-'05 (L)

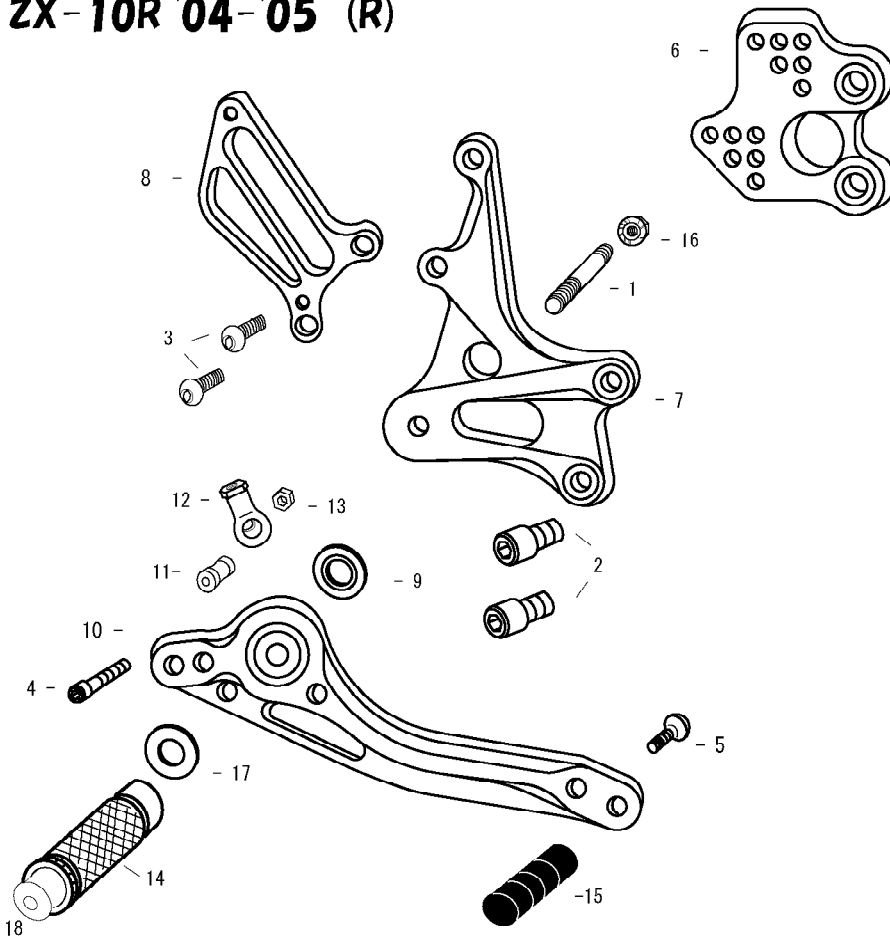


1. STUD BOLT LONG
2. SOCKET HEAD M8 × 15mm × 2
3. BUTTON HEAD M6 × 10mm × 2
4. BUTTON HEAD M6 × 20mm
5. BUTTON HEAD M6 × 20mm
6. BASE PLATE [L]
7. STEP PLATE [L]
8. HEEL GUARD [L] (HG3)
9. FOOT PEG BEARING COLLAR 10
10. SHIFT ROD 170
11. MALE ROD END M6
12. JAM NUT M6
13. ROD END COLLAR 3
14. REVERSE STUD M6
15. REVERSE JAM NUT M6 × 2
16. SHIFT PEDAL 60 (SPD1)
17. PEG WASHER M8
18. FOOT PEG
19. PEDAL TIP DELRIN
20. FLANGE NUT M8
21. FOOT PEG END CAP

※ADJUST THE STOCK CHANGE ARM WHEN INSTALLING SATO REAR SETS.



ZX-10R '04-'05 (R)



1. STUD BOLT SHORT × 1
2. SOCKET HEAD M8 × 15mm × 2
3. BUTTON HEAD M8 × 25mm × 2
4. SOCKET HEAD M6 × 40mm × 1
5. BUTTON HEAD M6 × 20mm × 1
6. BASE PLATE [R]
7. STEP PLATE [R]
8. HEEL GUARD [R] (HG9)
9. BEARING COLLAR SUS
10. BRAKE PEDAL 150 (BPD1)
11. BRAKE ROD END COLLAR 19 (BK)
12. 6-M8 FEMALE ROD END
13. PLAIN NUT M6
14. FOOT PEG
15. PEDAL TIP DELRIN
16. FLANGE NUT M8
17. PEG WASHER M8
18. FOOT PEG END CAP

POSITIONS		
1	0mm	0mm
2	0mm	10mm Up
3	0mm	20mm Up
4	10mm Back	10mm Up
5	10mm Back	20mm Up
6	20mm Back	20mm Up

All measurements are in relation to stock position (0 mm)