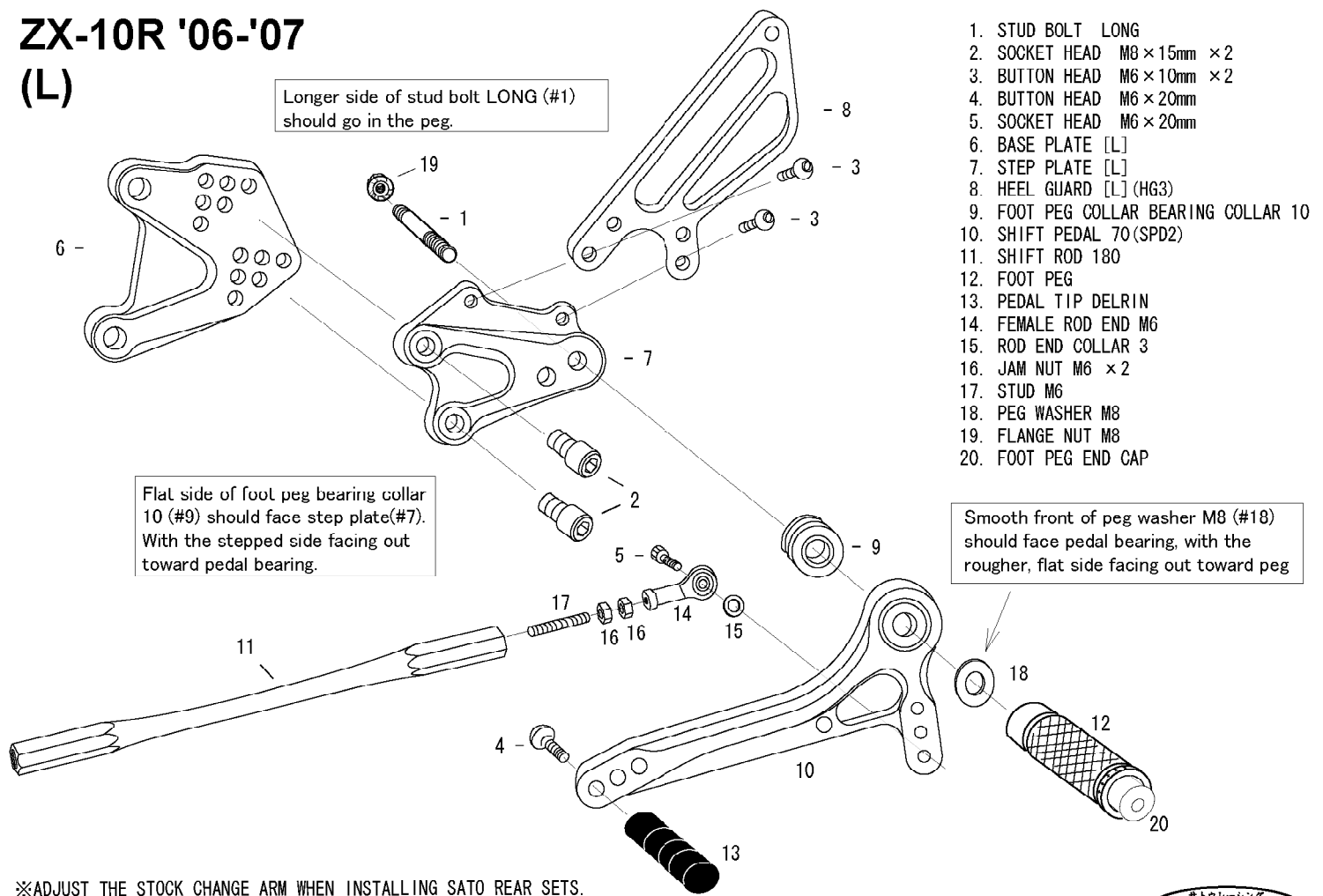


# ZX-10R '06-'07

(L)

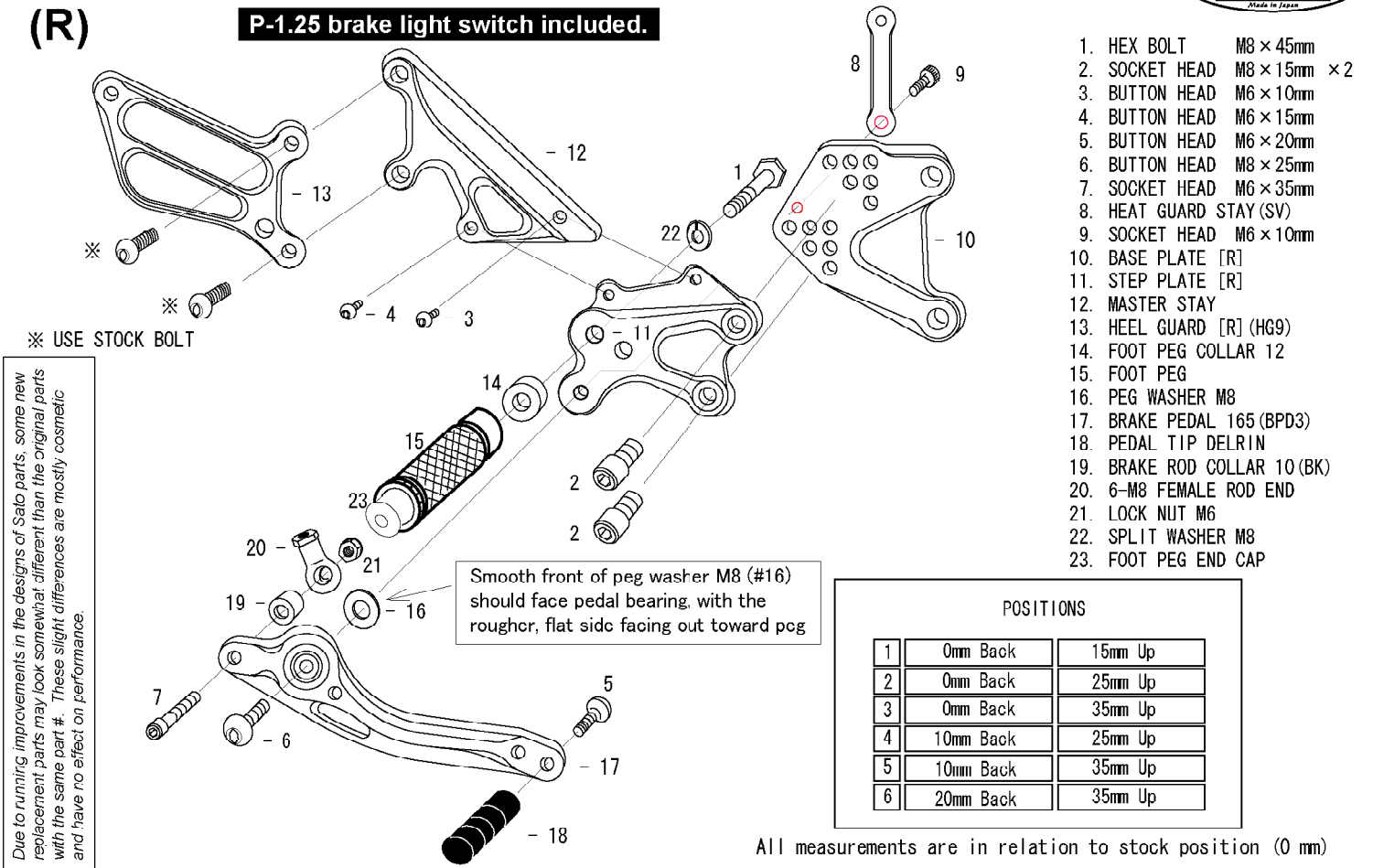


1. STUD BOLT LONG
2. SOCKET HEAD M8 × 15mm × 2
3. BUTTON HEAD M6 × 10mm × 2
4. BUTTON HEAD M6 × 20mm
5. SOCKET HEAD M6 × 20mm
6. BASE PLATE [L]
7. STEP PLATE [L]
8. HEEL GUARD [L] (HG3)
9. FOOT PEG COLLAR BEARING COLLAR 10
10. SHIFT PEDAL 70 (SPD2)
11. SHIFT ROD 180
12. FOOT PEG
13. PEDAL TIP DELRIN
14. FEMALE ROD END M6
15. ROD END COLLAR 3
16. JAM NUT M6 × 2
17. STUD M6
18. PEG WASHER M8
19. FLANGE NUT M8
20. FOOT PEG END CAP



(R)

**P-1.25 brake light switch included.**



1. HEX BOLT M8 × 45mm
2. SOCKET HEAD M8 × 15mm × 2
3. BUTTON HEAD M6 × 10mm
4. BUTTON HEAD M6 × 15mm
5. BUTTON HEAD M6 × 20mm
6. BUTTON HEAD M8 × 25mm
7. SOCKET HEAD M6 × 35mm
8. HEAT GUARD STAY (SV)
9. SOCKET HEAD M6 × 10mm
10. BASE PLATE [R]
11. STEP PLATE [R]
12. MASTER STAY
13. HEEL GUARD [R] (HG9)
14. FOOT PEG COLLAR 12
15. FOOT PEG
16. PEG WASHER M8
17. BRAKE PEDAL 165 (BPD3)
18. PEDAL TIP DELRIN
19. BRAKE ROD COLLAR 10 (BK)
20. 6-M8 FEMALE ROD END
21. LOCK NUT M6
22. SPLIT WASHER M8
23. FOOT PEG END CAP

Due to running improvements in the designs of Sato parts, some new replacement parts may look somewhat different than the original parts with the same part #. These slight differences are mostly cosmetic and have no effect on performance.

POSITIONS		
1	0mm Back	15mm Up
2	0mm Back	25mm Up
3	0mm Back	35mm Up
4	10mm Back	25mm Up
5	10mm Back	35mm Up
6	20mm Back	35mm Up

All measurements are in relation to stock position (0 mm)