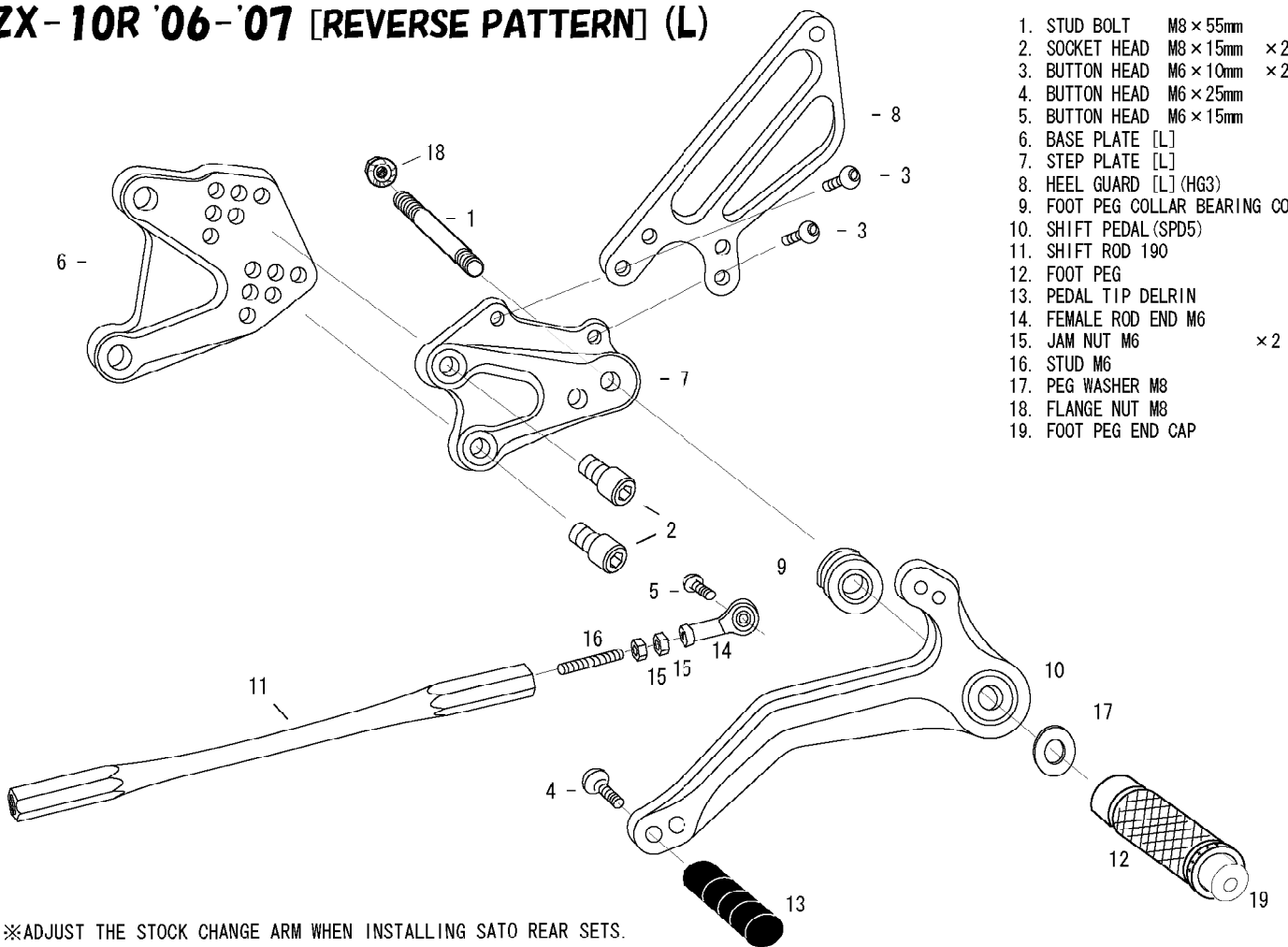


# ZX-10R '06-'07 [REVERSE PATTERN] (L)

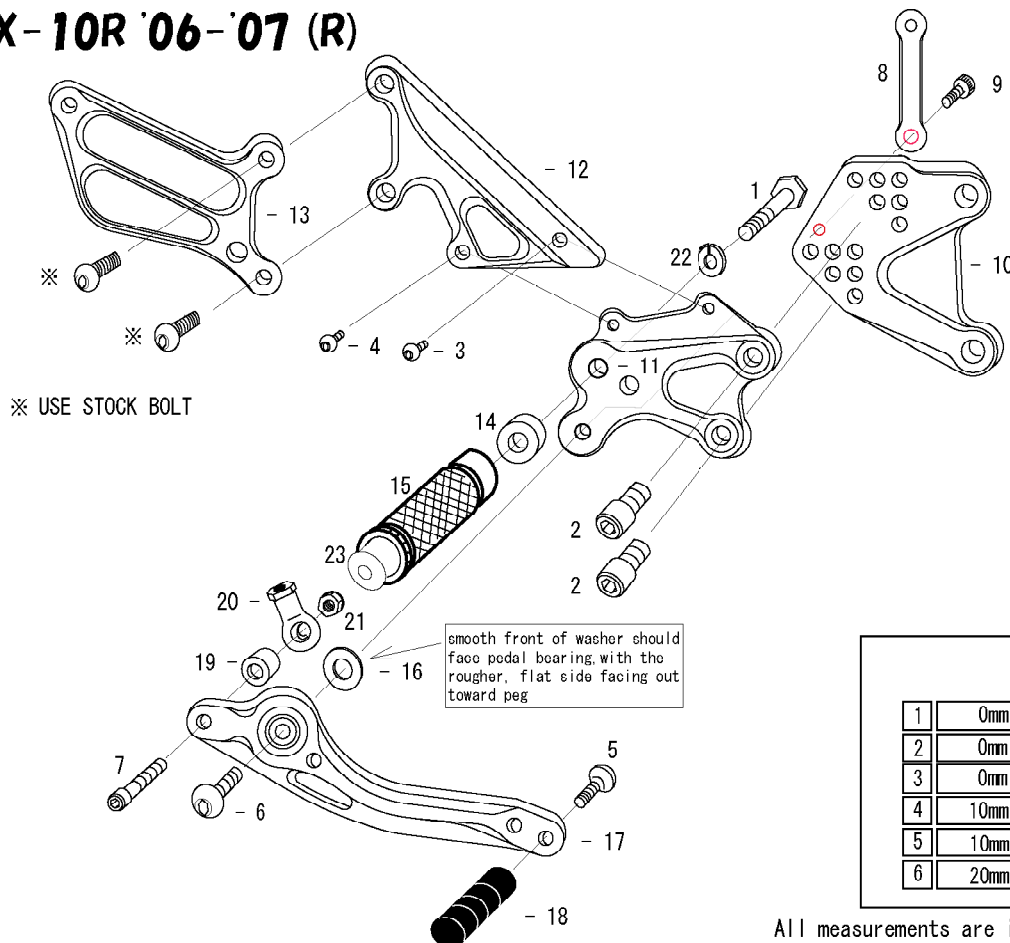


1. STUD BOLT M8 × 55mm
2. SOCKET HEAD M8 × 15mm × 2
3. BUTTON HEAD M6 × 10mm × 2
4. BUTTON HEAD M6 × 25mm
5. BUTTON HEAD M6 × 15mm
6. BASE PLATE [L]
7. STEP PLATE [L]
8. HEEL GUARD [L] (HG3)
9. FOOT PEG COLLAR BEARING COLLAR 12.5
10. SHIFT PEDAL (SPD5)
11. SHIFT ROD 190
12. FOOT PEG
13. PEDAL TIP DELRIN
14. FEMALE ROD END M6
15. JAM NUT M6 × 2
16. STUD M6
17. PEG WASHER M8
18. FLANGE NUT M8
19. FOOT PEG END CAP

※ADJUST THE STOCK CHANGE ARM WHEN INSTALLING SATO REAR SETS.



# ZX-10R '06-'07 (R)



1. HEX BOLT M8 × 45mm
2. SOCKET HEAD M8 × 15mm × 2
3. BUTTON HEAD M6 × 10mm
4. BUTTON HEAD M6 × 15mm
5. BUTTON HEAD M6 × 25mm
6. BUTTON HEAD M8 × 25mm
7. SOCKET HEAD M6 × 35mm
8. HEAT GUARD STAY (SV)
9. SOCKET HEAD M6 × 10mm
10. BASE PLATE [R]
11. STEP PLATE [R]
12. MASTER STAY
13. HEEL GUARD [R] (HG9)
14. FOOT PEG COLLAR 12
15. FOOT PEG
16. PEG WASHER M8
17. BRAKE PEDAL 165 (BPD3)
18. PEDAL TIP DELRIN
19. BRAKE ROD COLLAR 10 (BK)
20. 6-M8 FEMALE ROD END
21. LOCK NUT M6
22. SPLIT WASHER M8
23. FOOT PEG END CAP

※ USE STOCK BOLT

smooth front of washer should face pedal bearing, with the rougher, flat side facing out toward peg

POSITIONS		
1	0mm Back	15mm Up
2	0mm Back	25mm Up
3	0mm Back	35mm Up
4	10mm Back	25mm Up
5	10mm Back	35mm Up
6	20mm Back	35mm Up

All measurements are in relation to stock position (0 mm)