

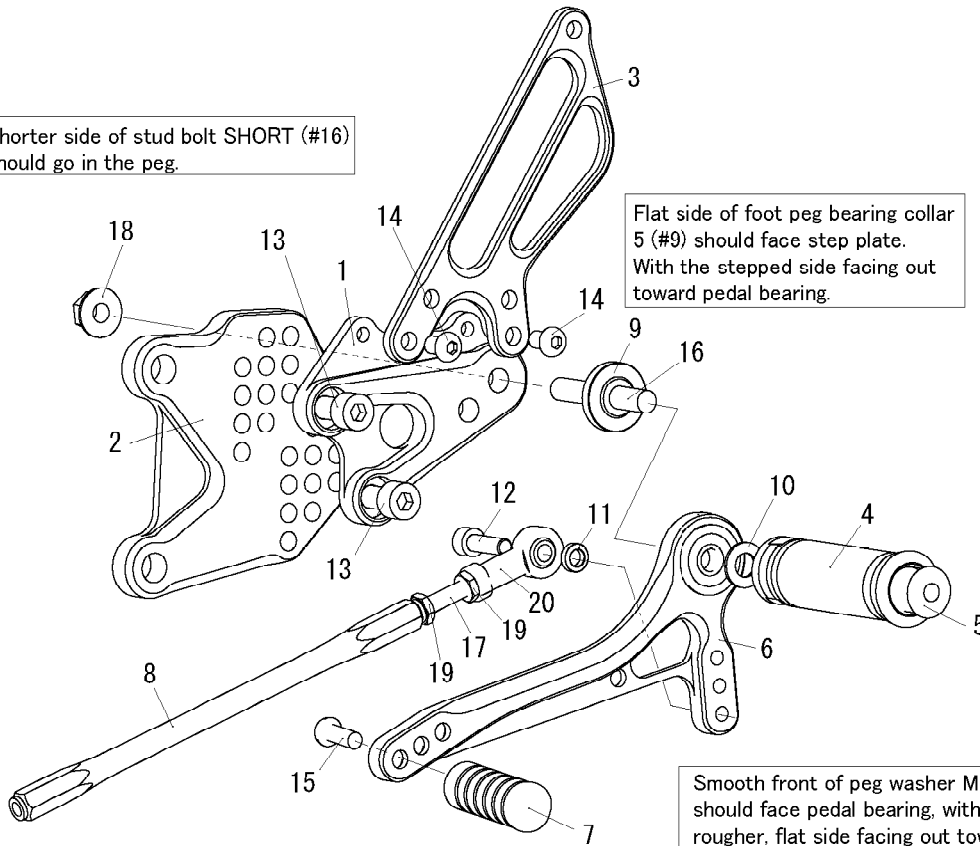
ZX-10R '08- (L)

Shorter side of stud bolt SHORT (#16) should go in the peg.

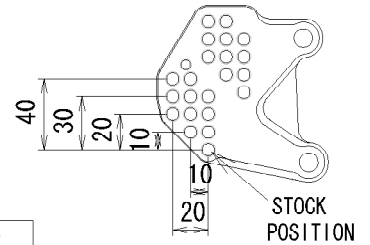
Flat side of foot peg bearing collar 5 (#9) should face step plate. With the stepped side facing out toward pedal bearing.

Smooth front of peg washer M8 (#10) should face pedal bearing, with the rougher, flat side facing out toward peg

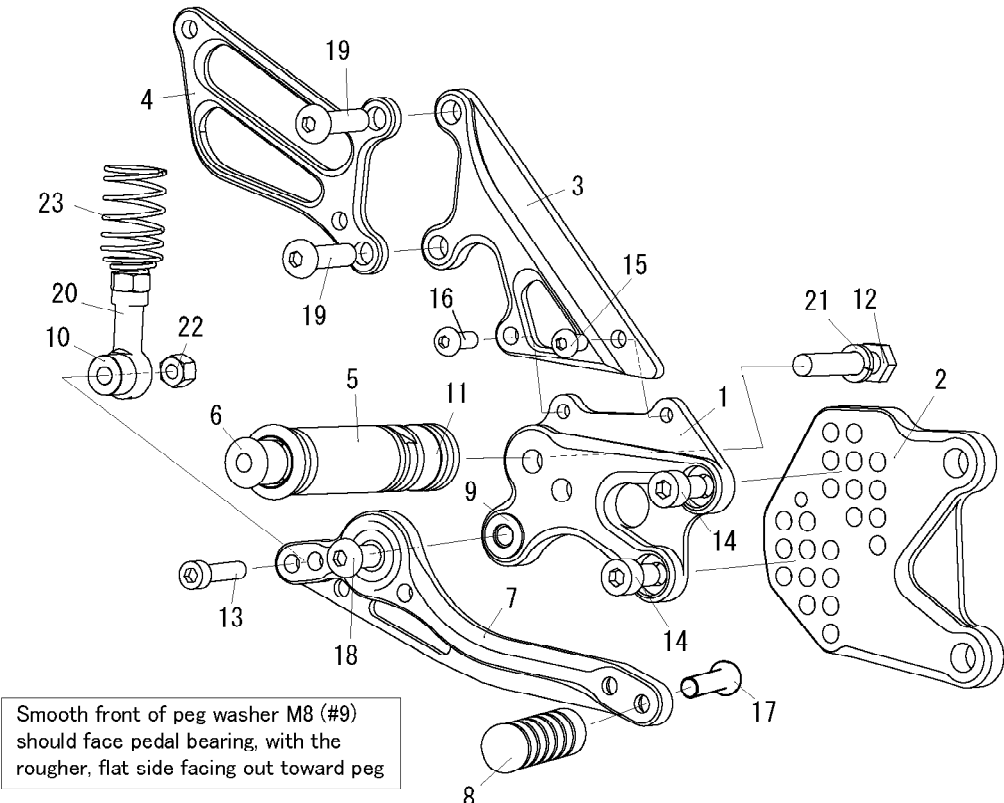
1. STEP PLATE [L]
2. BASE PLATE [L]
3. HEEL GUARD [L] (HG14)
4. FOOT PEG
5. FOOT PEG END CAP
6. SHIFT PEDAL 70 (SPD2)
7. PEDAL TIP DELRIN
8. SHIFT ROD 180
9. FOOT PEG BEARING COLLAR 5
10. PEG WASHER M8
11. ROD END COLLAR 3
12. SOCKET HEAD M6×20mm
13. SOCKET HEAD M8×15mm ×2
14. BUTTON HEAD M6×10mm ×2
15. BUTTON HEAD M6×20mm
16. STUD BOLT SHORT
17. STUD BOLT M6
18. FLANGE NUT M8
19. JAM NUT M6
20. FEMALE ROD END M6



◆ 11 ADJUSTABLE POSITIONS ◆



ZX-10R '08- (R)



Smooth front of peg washer M8 (#9) should face pedal bearing, with the rougher, flat side facing out toward peg

1. STEP PLATE [R]
2. BASE PLATE [R]
3. MASTER STAY
4. HEEL GUARD [R] (HG9)
5. FOOT PEG
6. FOOT PEG END CAP
7. BRAKE PEDAL 150 (BPD1)
8. PEDAL TIP DELRIN
9. PEG WASHER M8
10. BRAKE ROD COLLAR 10 (BK)
11. FOOT PEG COLLAR 12
12. HEX HEAD M8×40mm
13. SOCKET HEAD M6×35mm
14. SOCKET HEAD M8×15mm ×2
15. BUTTON HEAD M6×10mm
16. BUTTON HEAD M6×15mm
17. BUTTON HEAD M6×20mm
18. BUTTON HEAD M8×25mm
19. BUTTON HEAD M8×30mm ×2
20. 6-M8 FEMALE ROD END
21. SPLIT WASHER M8
22. LOCK NUT M6
23. RETURN SPRING 40 (OPTION)