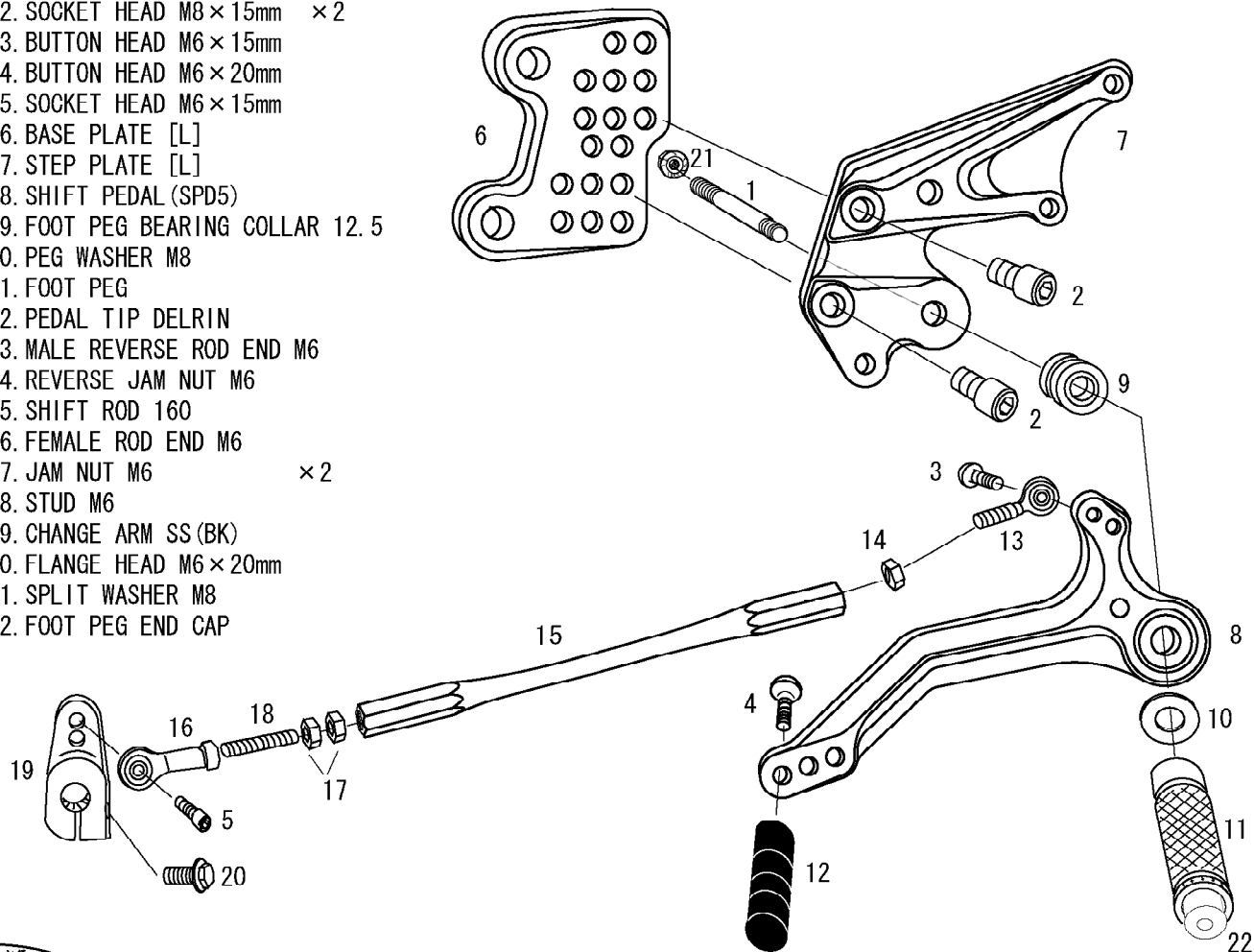


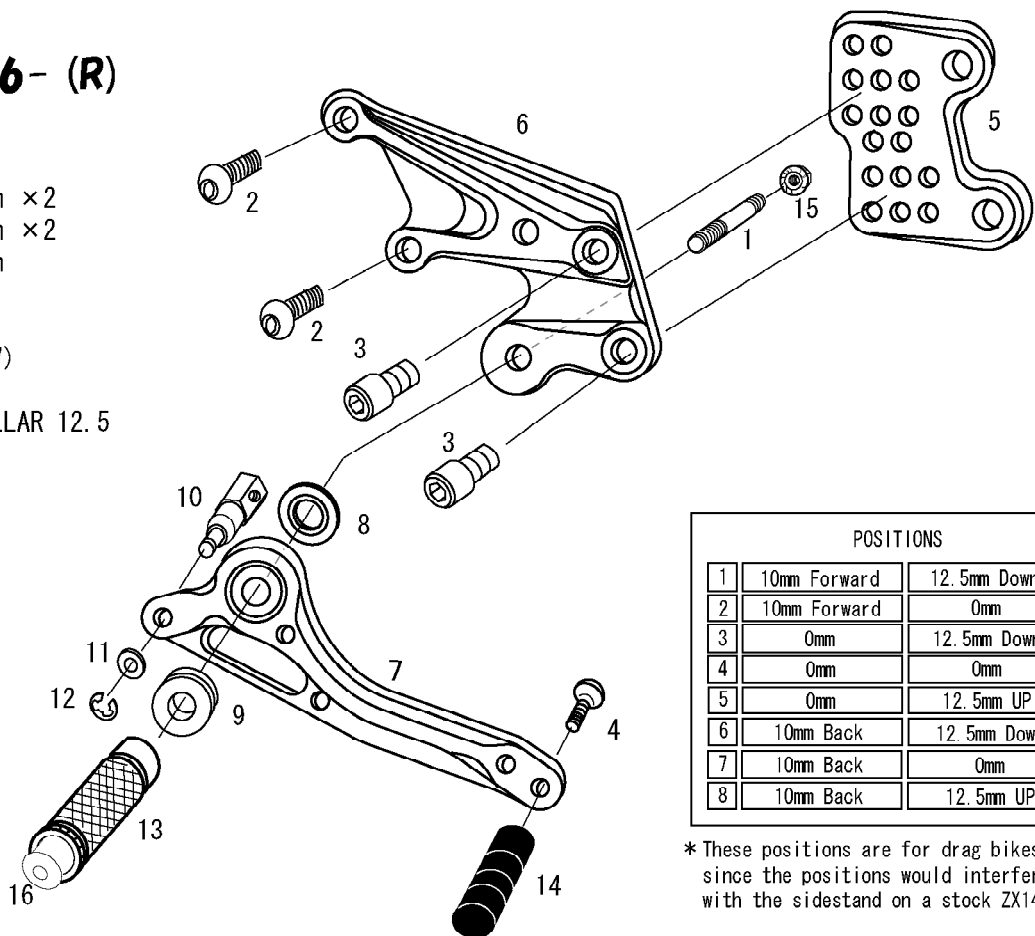
# ZZR1400/ZX-14 '06- REVERSE PATTERN (L)

1. STUD BOLT LONG
2. SOCKET HEAD M8 × 15mm × 2
3. BUTTON HEAD M6 × 15mm
4. BUTTON HEAD M6 × 20mm
5. SOCKET HEAD M6 × 15mm
6. BASE PLATE [L]
7. STEP PLATE [L]
8. SHIFT PEDAL (SPD5)
9. FOOT PEG BEARING COLLAR 12.5
10. PEG WASHER M8
11. FOOT PEG
12. PEDAL TIP DELRIN
13. MALE REVERSE ROD END M6
14. REVERSE JAM NUT M6
15. SHIFT ROD 160
16. FEMALE ROD END M6
17. JAM NUT M6 × 2
18. STUD M6
19. CHANGE ARM SS (BK)
20. FLANGE HEAD M6 × 20mm
21. SPLIT WASHER M8
22. FOOT PEG END CAP



# ZZR1400/ZX-14 '06- (R)

1. STUD BOLT LONG
2. BUTTON HEAD M8 × 20mm × 2
3. SOCKET HEAD M8 × 15mm × 2
4. BUTTON HEAD M6 × 25mm
5. BASE PLATE [R]
6. STEP PLATE [R]
7. BRAKE PEDAL 130 (BPD7)
8. BEARING COLLAR SUS
9. FOOT PEG BEARING COLLAR 12.5
10. BRAKE ROD M40
11. WASHER M6
12. E CLIP M6
13. FOOT PEG
14. PEDAL TIP DELRIN
15. FLANGE NUT M8
16. FOOT PEG END CAP



POSITIONS		
1	10mm Forward	12.5mm Down*
2	10mm Forward	0mm
3	0mm	12.5mm Down*
4	0mm	0mm
5	0mm	12.5mm UP
6	10mm Back	12.5mm Down*
7	10mm Back	0mm
8	10mm Back	12.5mm UP

\* These positions are for drag bikes only since the positions would interfere with the sidestand on a stock ZX14 bike.