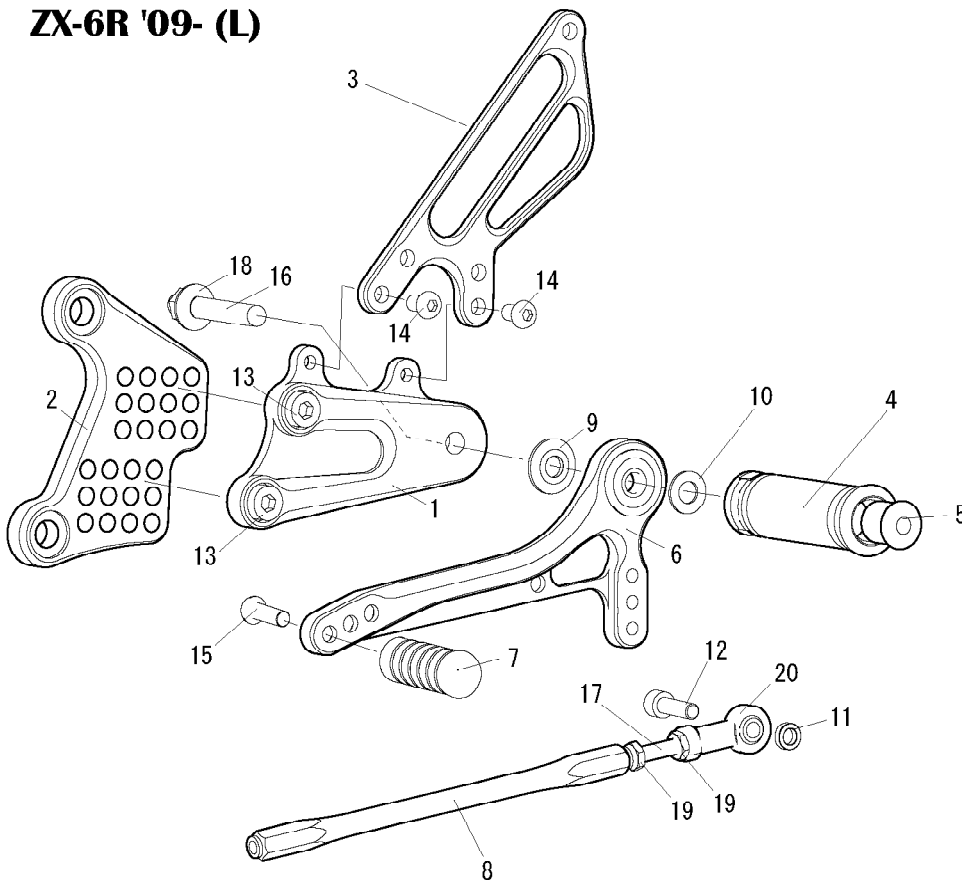


ZX-6R '09- (L)

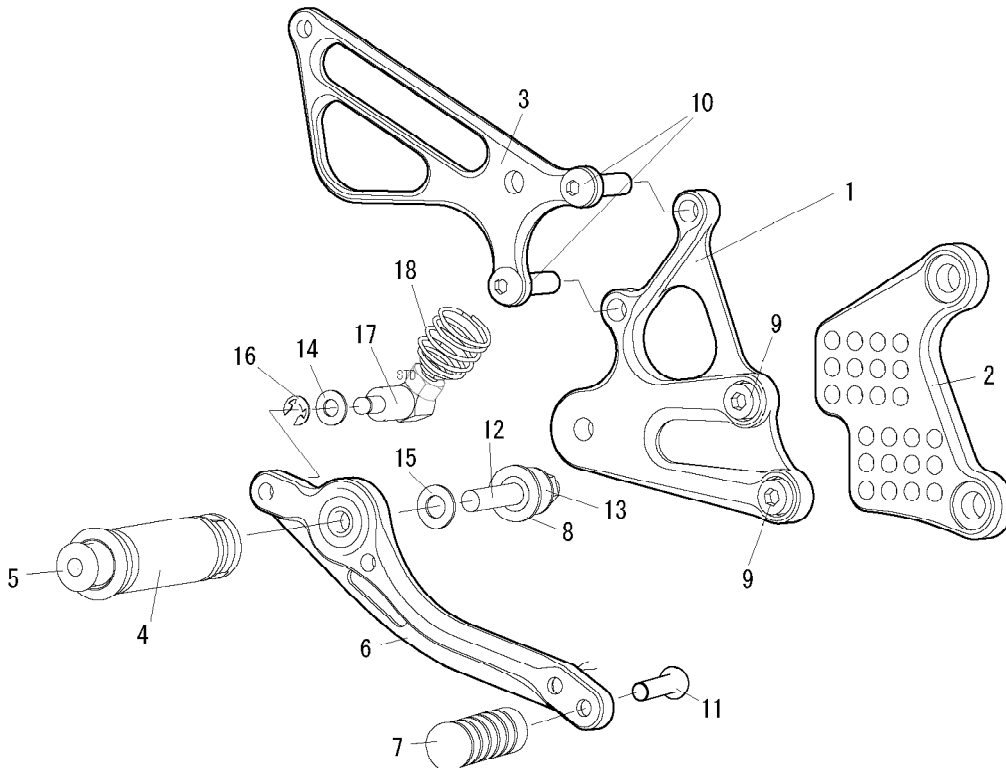


1. STEP PLATE [L]
2. BASE PLATE [L]
3. HEEL GUARD [L] (HG3)
4. FOOT PEG
5. FOOT PEG END CAP
6. SHIFT PEDAL 70 (SPD2)
7. PEDAL TIP DELRIN
8. SHIFT ROD 170
9. BEARING COLLAR SUS
10. PEG WASHER M8
11. ROD END COLLAR 3
12. SOCKET HEAD M6 × 20mm
13. SOCKET HEAD M8 × 15mm × 2
14. BUTTON HEAD M6 × 10mm × 2
15. BUTTON HEAD M6 × 20mm
16. STUD BOLT SHORT
17. STUD M6
18. FLANGE NUT M8
19. M6 JAM NUT × 2
20. FEMALE ROD END M6
21. SOCKET HEAD M6 × 30mm(FOR REVERSE)
22. PLAIN NUT M6(FOR REVERSE)

※ADJUST THE STOCK CHANGE ARM WHEN INSTALLING SATO REAR SETS.



ZX-6R '09- (R)



1. STEP PLATE [R]
2. BASE PLATE [R]
3. HEEL GUARD [R] (HG18)
4. FOOT PEG
5. FOOT PEG END CAP
6. BRAKE PEDAL 165 (BPD3)
7. PEDAL TIP DELRIN
8. BEARING COLLAR SUS
9. SOCKET HEAD M8 × 15mm × 2
10. BUTTON HEAD M8 × 30mm × 2
11. BUTTON HEAD M6 × 20mm
12. STUD BOLT SHORT
13. FLANGE NUT M8
14. PLAIN WASHER M6
15. PEG WASHER M8
16. E CLIP M6
17. BRAKE ROD M40
18. RETURN SPRING(OPTION)

