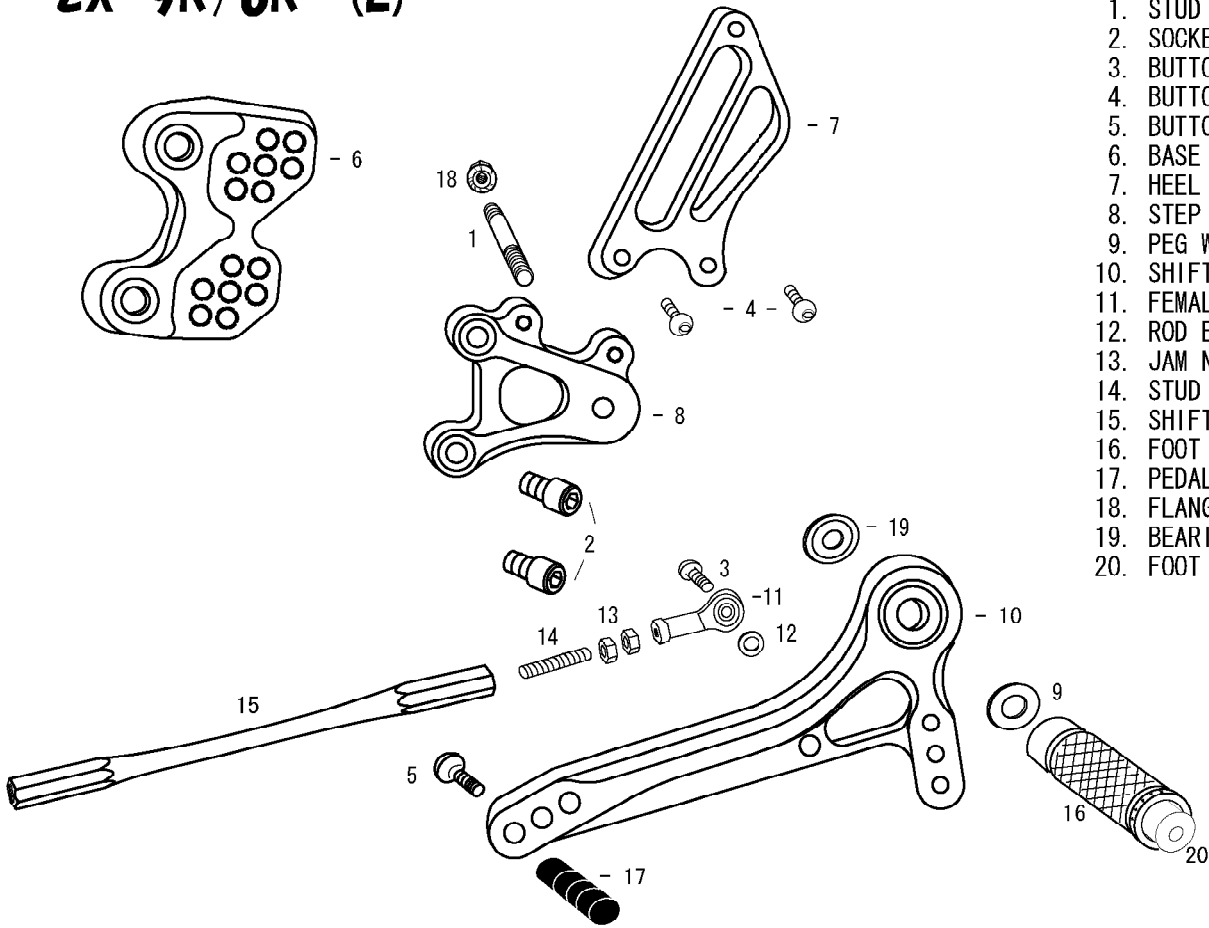


ZX-9R/6R (L)

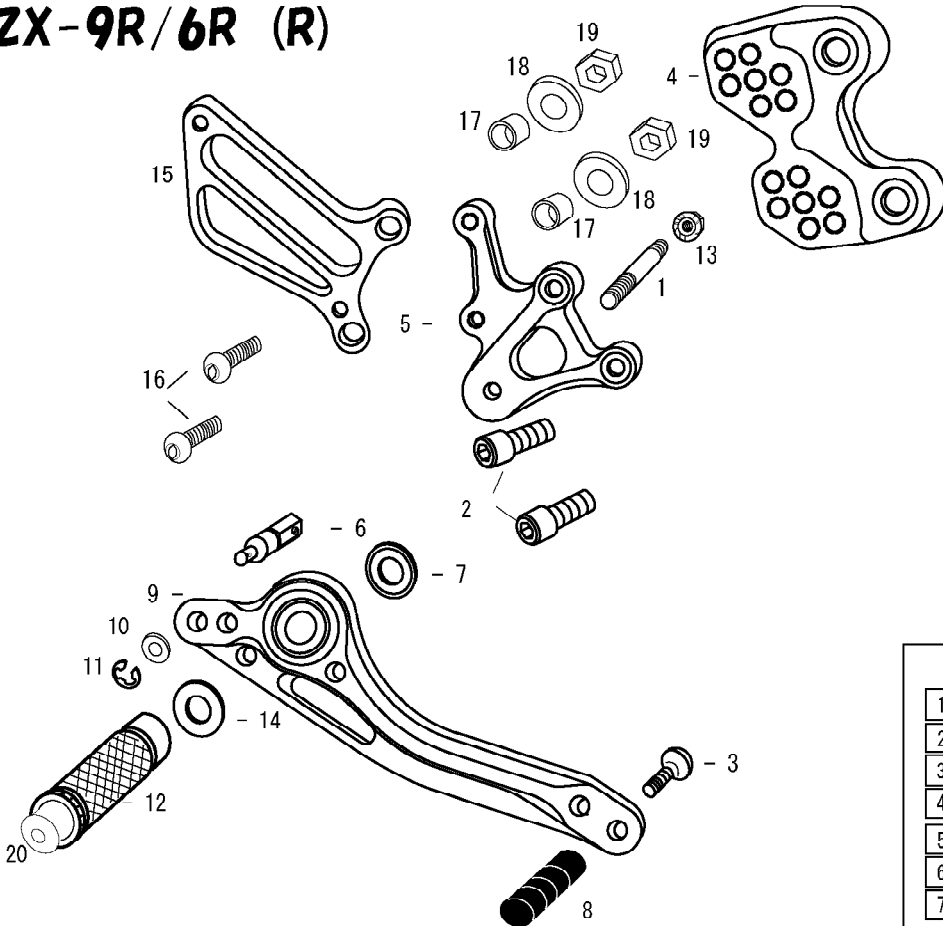


1. STUD BOLT SHORT
2. SOCKET HEAD M8×15mm ×2
3. BUTTON HEAD M6×20mm
4. BUTTON HEAD M6×10mm ×2
5. BUTTON HEAD M6×20mm
6. BASE PLATE [L]
7. HEEL GUARD [L] (HG2)
8. STEP PLATE [L]
9. PEG WASHER M8
10. SHIFT PEDAL 60 (SPD1)
11. FEMALE ROD END M6
12. ROD END COLLAR 3
13. JAM NUT M6 ×2
14. STUD M6
15. SHIFT ROD 170
16. FOOT PEG
17. PEDAL TIP DELRIN
18. FLANGE NUT M8
19. BEARING COLLAR SUS
20. FOOT PEG END CAP

※ADJUST THE STOCK CHANGE ARM WHEN INSTALLING SATO REAR SETS.



ZX-9R/6R (R)



1. STUD BOLT SHORT
2. SOCKET HEAD M8×15mm ×2
3. BUTTON HEAD M6×25mm
4. BASE PLATE [R]
5. STEP PLATE [R]
6. BRAKE ROD M40
7. BEARING COLLAR SUS
8. PEDAL TIP DELRIN
9. BRAKE PEDAL 150 (BPD1)
10. PLAIN WASHER M6
11. E CLIP M6
12. FOOT PEG
13. FLANGE NUT M8
14. PEG WASHER M8
15. HEEL GUARD [R] (HG9)
16. BUTTON HEAD M8×30mm ×2
17. COLLAR 8 AL ×2
18. PLAIN WASHER M8
19. PLAIN NUT M8
20. FOOT PEG END CAP

POSITIONS		
1	0mm	15mm Up
2	0mm	25mm Up
3	10mm Back	15mm Up
4	10mm Back	25mm Up
5	10mm Back	35mm Up
6	20mm Back	25mm Up
7	20mm Back	35mm Up

All measurements are in relation to stock position (0 mm)