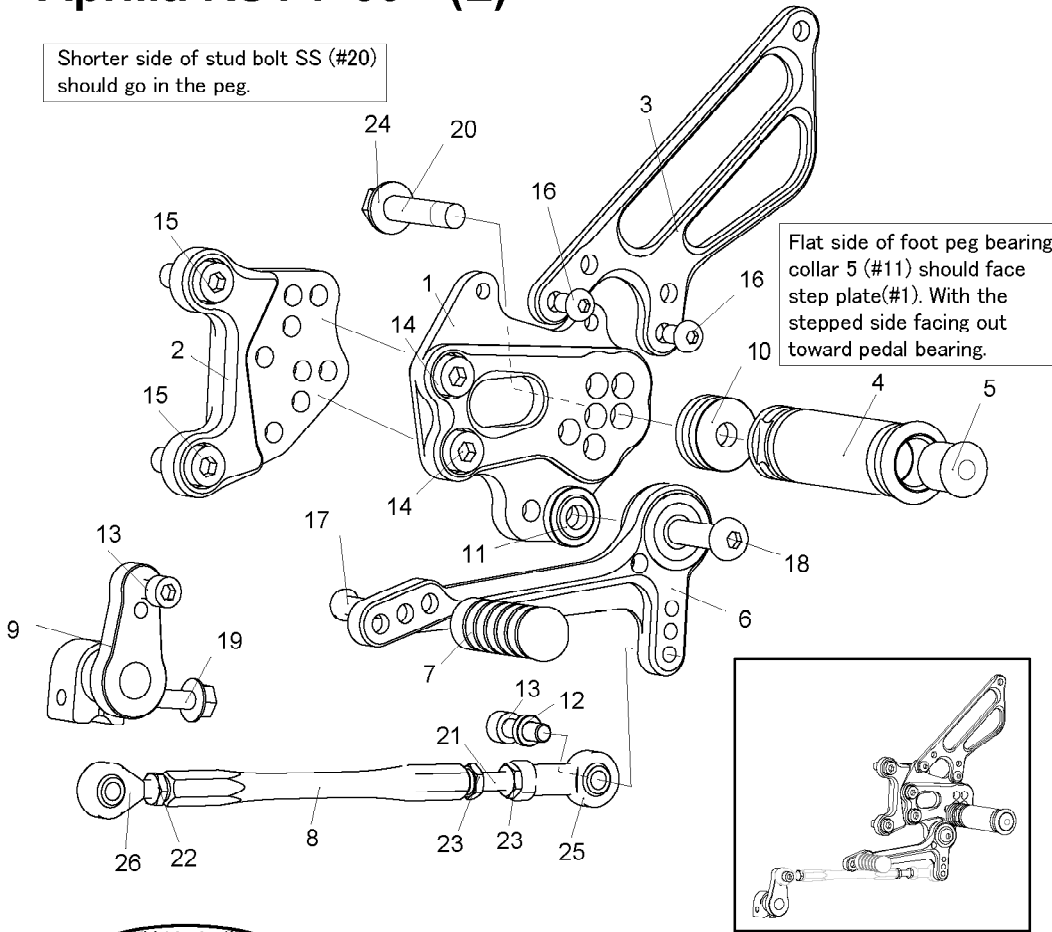


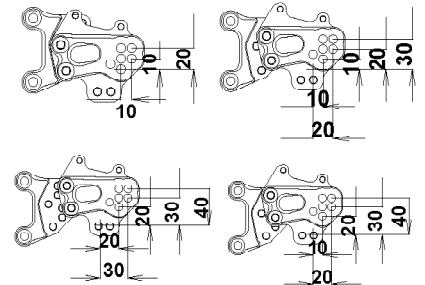
Aprilia RSV4 '09- (L)

Shorter side of stud bolt SS (#20) should go in the peg.

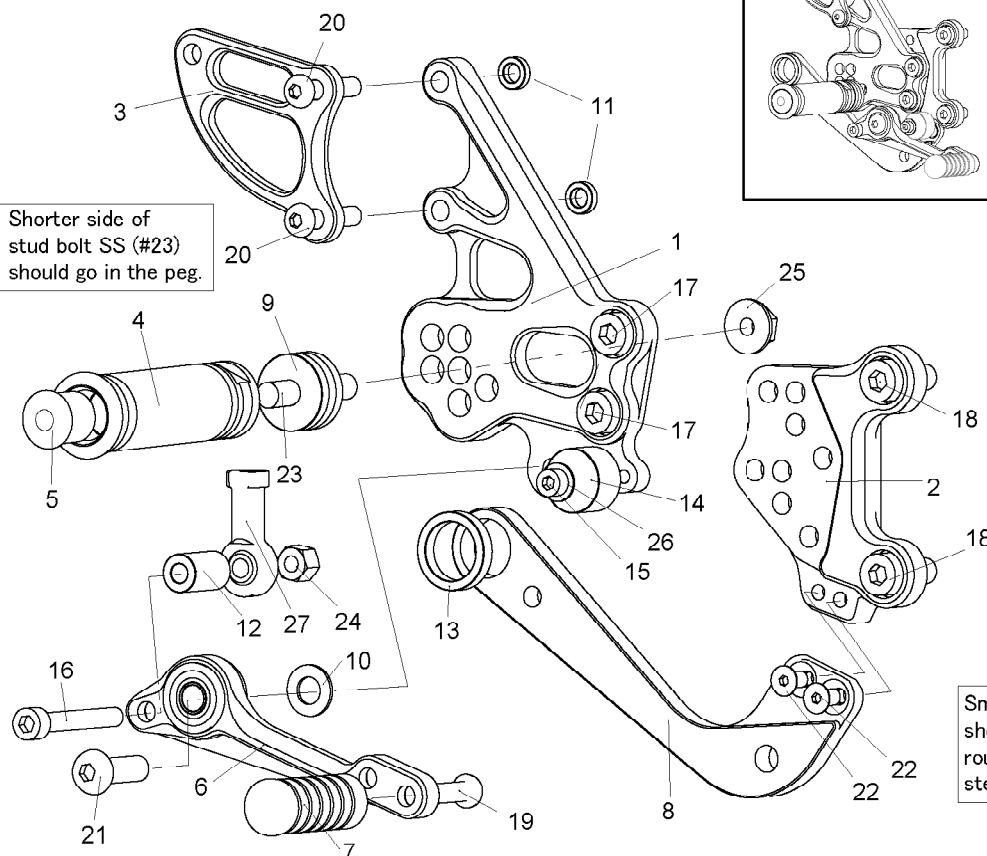
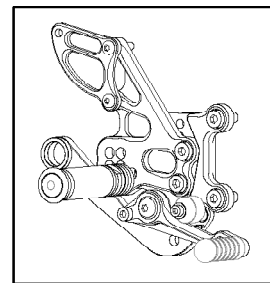


1. STEP PLATE [L]
2. BASE PLATE [L]
3. HEEL GUARD [L] (HG14)
4. FOOT PEG
5. FOOT PEG END CAP
6. SHIFT PEDAL SCP75 (SPD12)
7. PEDAL TIP DELRIN
8. SHIFT ROD 120
9. CHANGE ARM (CA3, BK)
10. FOOT PEG COLLAR 12
11. FOOT PEG BEARING COLLAR 5 (BK)
12. ROD END COLLAR 3
13. SOCKET HEAD M6 × 20mm × 2
14. SOCKET HEAD M8 × 15mm × 2
15. SOCKET HEAD M8 × 20mm × 2
16. BUTTON HEAD M6 × 10mm × 2
17. BUTTON HEAD M6 × 20mm
18. BUTTON HEAD M8 × 30mm
19. FLANGE HEAD M6 × 20mm
20. STUD BOLT SS
21. STUD M6
22. REVERSE JAM NUT M6
23. JAM NUT M6 × 2
24. FLANGE NUT M8
25. FEMALE ROD END M6
26. MALE REVERSE ROD END M6

- POSITIONS -



(R) P-1.0 brake light switch included.



1. STEP PLATE [R]
2. BASE PLATE [R]
3. HEEL GUARD [R] (HG22)
4. FOOT PEG
5. FOOT PEG END CAP
6. BRAKE PEDAL SBP145 (BPD15)
7. PEDAL TIP DELRIN
8. CANISTER BRACKET (BK)
9. FOOT PEG COLLAR 12
10. PEG WASHER M8
11. COLLAR 3-6 (SV) × 2
12. COLLAR 20-6 (BK)
13. COLLAR 5 (BK)
14. BRAKE PEDAL STOPPER DELRIN
15. SOCKET HEAD M5 × 20mm
16. SOCKET HEAD M6 × 45mm
17. SOCKET HEAD M8 × 15mm × 2
18. SOCKET HEAD M8 × 20mm × 2
19. BUTTON HEAD M6 × 20mm
20. BUTTON HEAD M6 × 30mm × 2
21. BUTTON HEAD M8 × 25mm
22. FLAT HEAD M5 × 10mm × 2
23. STUD BOLT SS
24. LOCK NUT M6
25. FLANGE NUT M8
26. PLAIN WASHER M5
27. FEMALE ROD END M6
28. BRAKE LIGHT SWITCH P-1.0

Smooth front of peg washer M8 (#10) should face pedal bearing, with the rougher, flat side facing out toward step plate(#1).