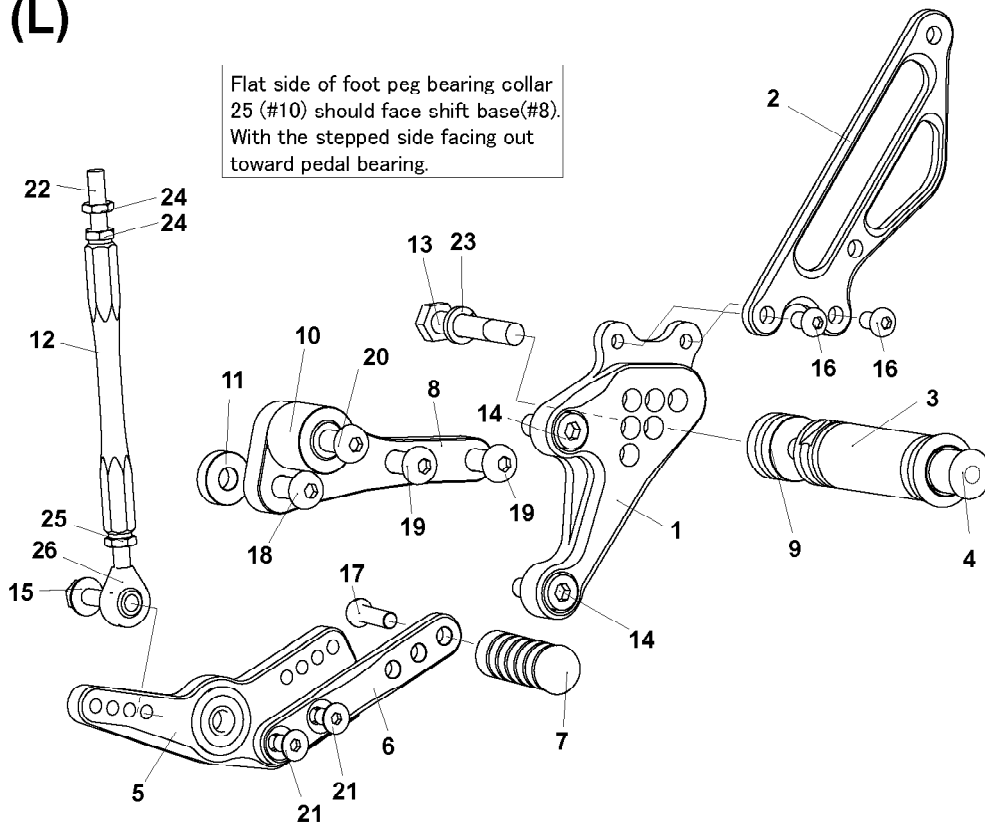


# BMW K1200R

(L)

Flat side of foot peg bearing collar 25 (#10) should face shift base(#8).  
With the stepped side facing out toward pedal bearing.



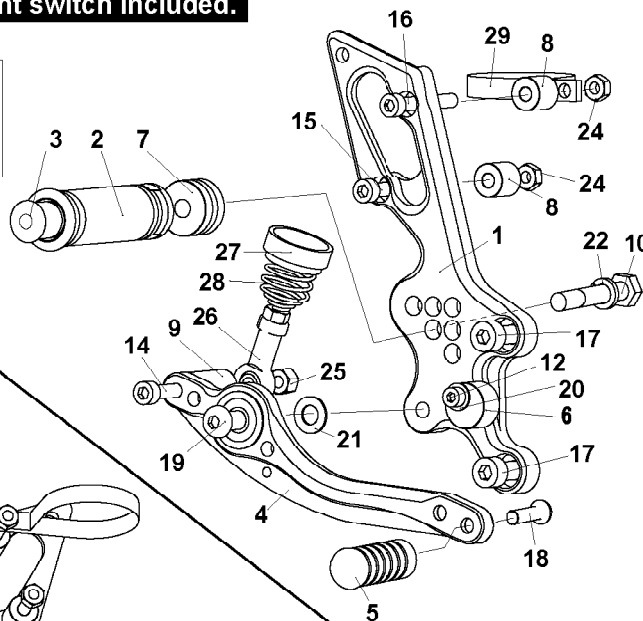
1. STEP PLATE [L]
2. HEEL GUARD [L](HG17)
3. FOOT PEG
4. FOOT PEG END CAP
5. SHIFT PEDAL (SPD13, BK)
6. SHIFT PEDAL (SPD8, BK)
7. PEDAL TIP DELRIN
8. SHIFT BASE (BK)
9. FOOT PEG COLLAR 15
10. FOOT PEG BEARING COLLAR 25 (BK)
11. BASE PLATE COLLAR 6
12. SHIFT ROD 110 (BK)
13. HEX HEAD M8 × 40mm
14. SOCKET HEAD M8 × 20mm × 2
15. FLANGE HEAD M6 × 20mm × 2
16. BUTTON HEAD M6 × 10mm × 2
17. BUTTON HEAD M6 × 20mm
18. BUTTON HEAD M8 × 25mm
19. BUTTON HEAD M8 × 40mm × 2
20. BUTTON HEAD M8 × 45mm
21. FLAT HEAD M6 × 10mm × 2
22. REVERSE STUD M6
23. SPLIT WASHER M8
24. REVERSE JAM NUT M6 × 2
25. JAM NUT M6
26. MALE ROD END M6



(R)

**No brake light switch included.**

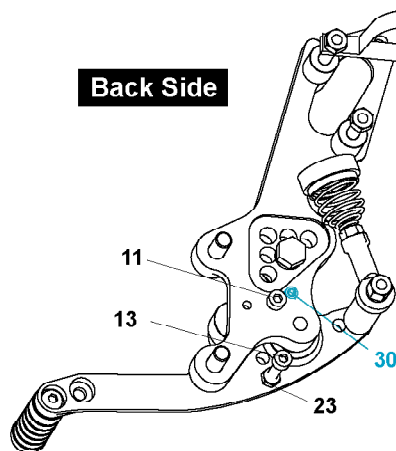
Smooth front of peg washer M8 (#21) should face pedal bearing, with the rougher, flat side facing out toward step plate (#1).



1. STEP PLATE [R]
2. FOOT PEG
3. FOOT PEG END CAP
4. BRAKE PEDAL (BPD2)
5. PEDAL TIP DELRIN
6. BRAKE PEDAL STOPPER DELRIN
7. FOOT PEG COLLAR 15
8. COLLAR 15-6 (BK) × 2
9. COLLAR 30-6 (BK)
10. HEX HEAD M8 × 40mm
11. SOCKET HEAD M5 × 5mm
12. SOCKET HEAD M5 × 20mm
13. SOCKET HEAD M5 × 25mm
14. SOCKET HEAD M6 × 55mm
15. SOCKET HEAD M6 × 40mm
16. SOCKET HEAD M6 × 45mm
17. SOCKET HEAD M8 × 20mm × 2
18. BUTTON HEAD M6 × 20mm
19. BUTTON HEAD M8 × 25mm
20. PLAIN WASHER M5
21. PEG WASHER M8
22. SPLIT WASHER M8
23. PLAIN NUT M5
24. PLAIN NUT M6 × 2
25. LOCK NUT M6
26. FEMALE ROD END M6
27. RETURN SPRING COLLAR DELRIN
28. RETURN SPRING 40
29. CYLINDER CUP CLAMP (SV)

★ 30. SET SCREW M6 × 12mm (STOCK)

**Back Side**



6 ADJUSTABLE POSITIONS

1	0mm	0mm
2	0mm	10mm Up
3	0mm	20mm Up
4	10mm Back	10mm Up
5	10mm Back	20mm Up
6	20mm Back	20mm Up