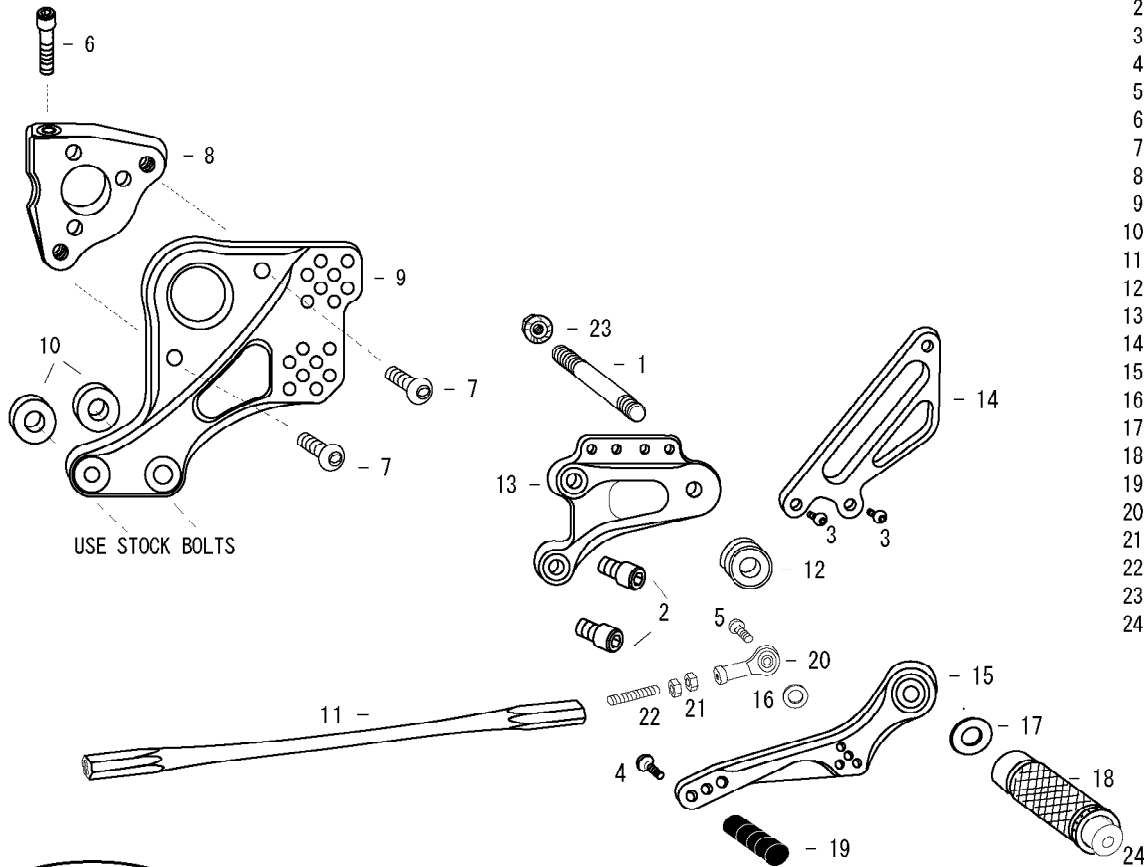


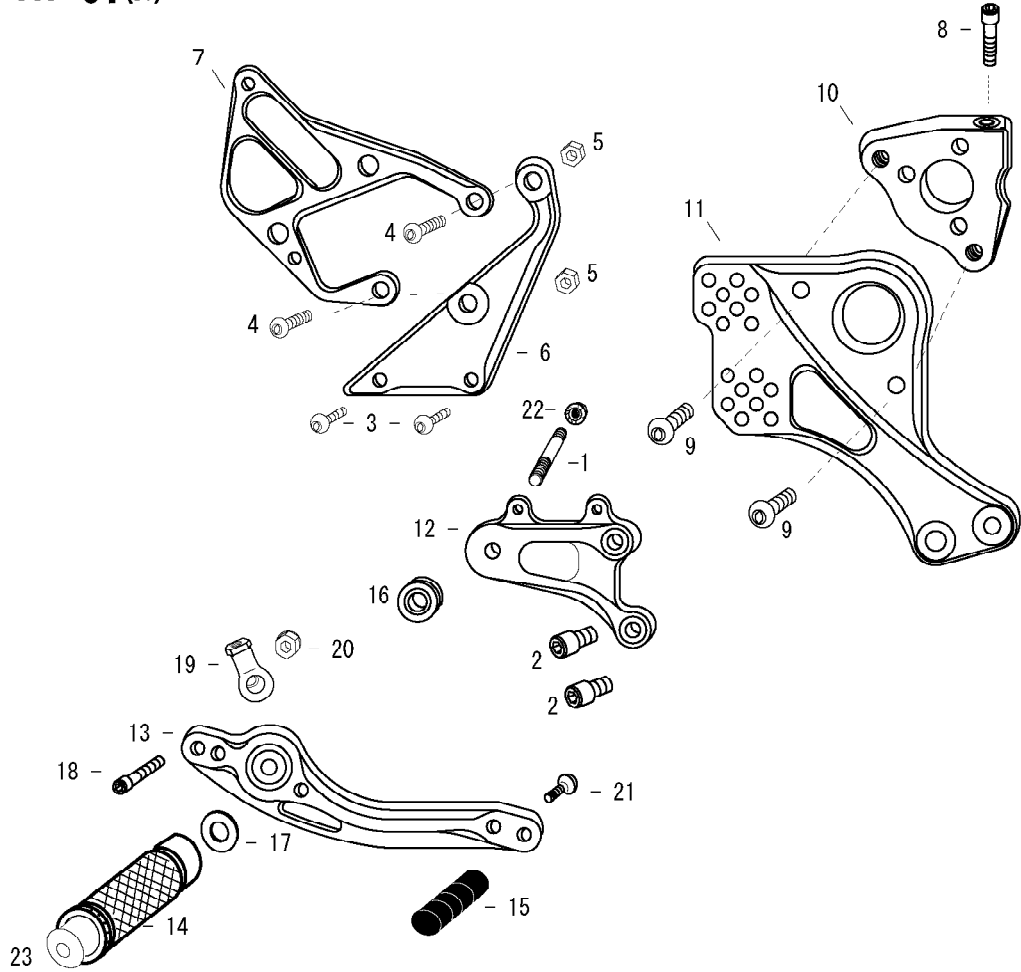
MT-01 REVERSE PATTERN (L)



- 1. STUD BOLT LONG
- 2. SOCKET HEAD M8 × 15mm × 2
- 3. BUTTON HEAD M6 × 10mm × 2
- 4. BUTTON HEAD M6 × 20mm
- 5. BUTTON HEAD M6 × 20mm
- 6. SOCKET HEAD M8 × 35mm
- 7. BUTTON HEAD M8 × 20mm × 2
- 8. BASE CLAMP [L] (BK)
- 9. BASE PLATE [L]
- 10. BASE PLATE COLLAR 12 (BK) × 2
- 11. SHIFT ROD 220
- 12. FOOT PEG BEARING COLLAR 15
- 13. STEP PLATE [L]
- 14. HEEL GUARD [L] (HG8)
- 15. SHIFT PEDAL (SPD4)
- 16. ROD END COLLAR 3
- 17. PEG WASHER M8
- 18. FOOT PEG
- 19. PEDAL TIP DELRIN
- 20. FEMALE REVERSE ROD END M6
- 21. REVERSE JAM NUT M6 × 2
- 22. REVERSE STUD M6
- 23. FLANGE NUT M8
- 24. FOOT PEG END CAP



MT-01(R)



POSITIONS		
1	12.5mm Back	27.5mm Up
2	12.5mm Back	42.5mm Up
3	20mm Back	35mm Up
4	20mm Back	50mm Up
5	27.5mm Back	27.5mm Up
6	27.5mm Back	42.5mm Up
7	35mm Back	35mm Up
8	35mm Back	50mm Up

All measurements are in relation to stock position (0 mm)

- 1. STUD BOLT LONG
- 2. SOCKET HEAD M8 × 15mm × 2
- 3. BUTTON HEAD M6 × 10mm × 2
- 4. BUTTON HEAD M8 × 35mm × 2
- 5. PLAIN NUT M8 × 2
- 6. MASTER STAY
- 7. HEEL GUARD [R]
- 8. SOCKET HEAD M8 × 35mm
- 9. BUTTON HEAD M8 × 20mm × 2
- 10. BASE CLAMP [R] (BK)
- 11. BASE PLATE [R]
- 12. STEP PLATE [R]
- 13. BRAKE PEDAL 180 (BPD2)
- 14. FOOT PEG
- 15. PEDAL TIP DELRIN
- 16. FOOT PEG BEARING COLLAR 10
- 17. PEG WASHER M8
- 18. SOCKET HEAD M6 × 25mm
- 19. 6-M8 FEMALE ROD END
- 20. LOCK NUT M6
- 21. BUTTON HEAD M6 × 25mm
- 22. FLANGE NUT M8
- 23. FOOT PEG END CAP