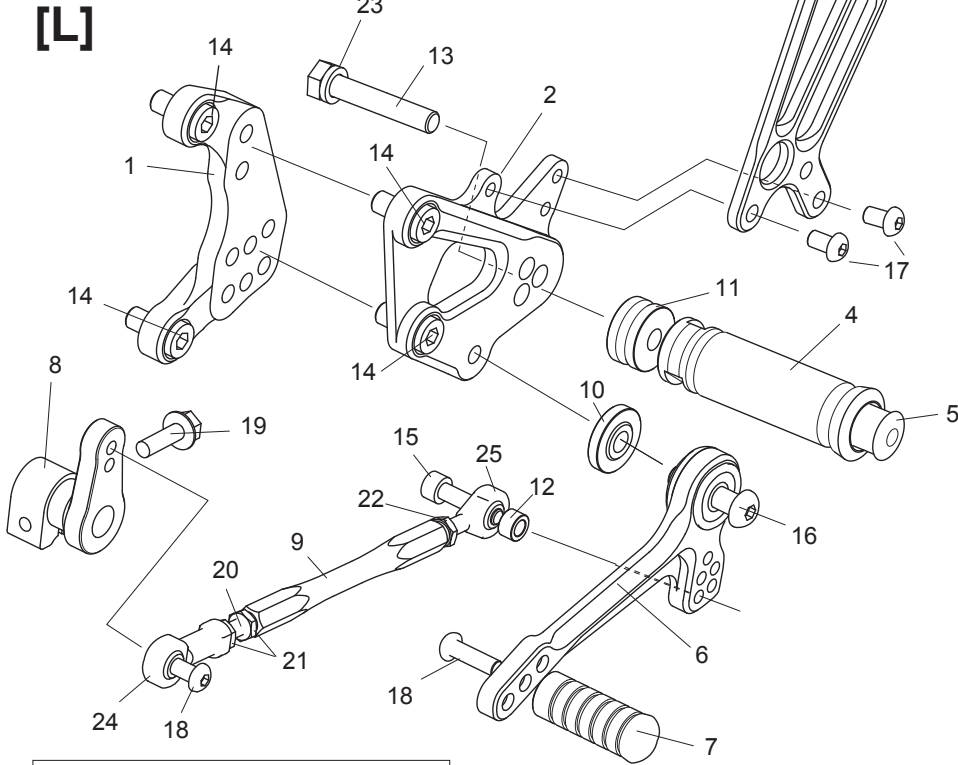


# MV AGUSTA F4 ( '09) REAR SETS

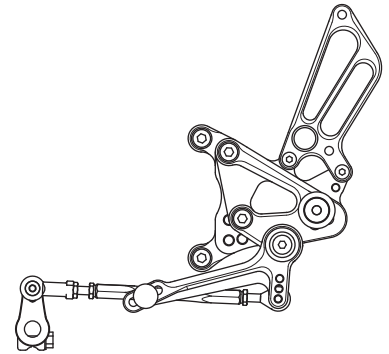
part# MV-F4RS2

## [L] SIDE

1. BASE PLATE [L]
2. STEP PLATE [L]
3. HEEL GUARD [L](HG6)
4. FOOT PEG
5. FOOT PEG END CAP
6. SHIFT PEDAL [SPD0912]
7. PEDAL TIP [DELFIN]
8. CHANGE ARM (CA3,BK)
9. SHIFT ROD 140
10. FOOT PEG BEARING COLLAR 5
11. FOOT PEG COLLAR 12
12. ROD END COLLAR 6 (GD)
13. HEX HEAD M8×45mm
14. SOCKET HEAD M8×15mm ×4
15. SOCKET HEAD M6×25mm
16. BUTTON HEAD M8×30mm
17. BUTTON HEAD M6×10mm ×2
18. BUTTON HEAD M6×20mm ×2
19. FLANGE HEAD M6×20mm
20. STUD BOLT M6×45
21. JAM NUT M6 ×2
22. REVERSE JAM NUT M6
23. SPLIT WASHER M8
24. FEMALE ROD END M6
25. MALE REVERSE ROD END M6



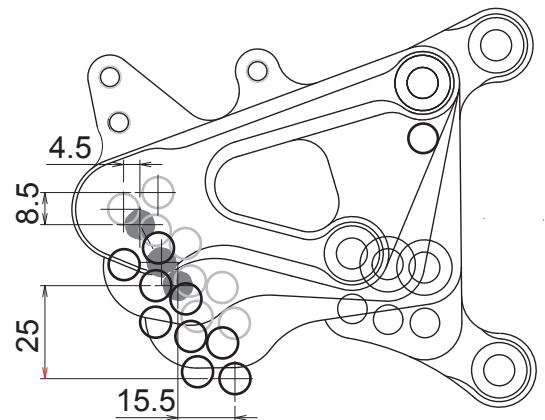
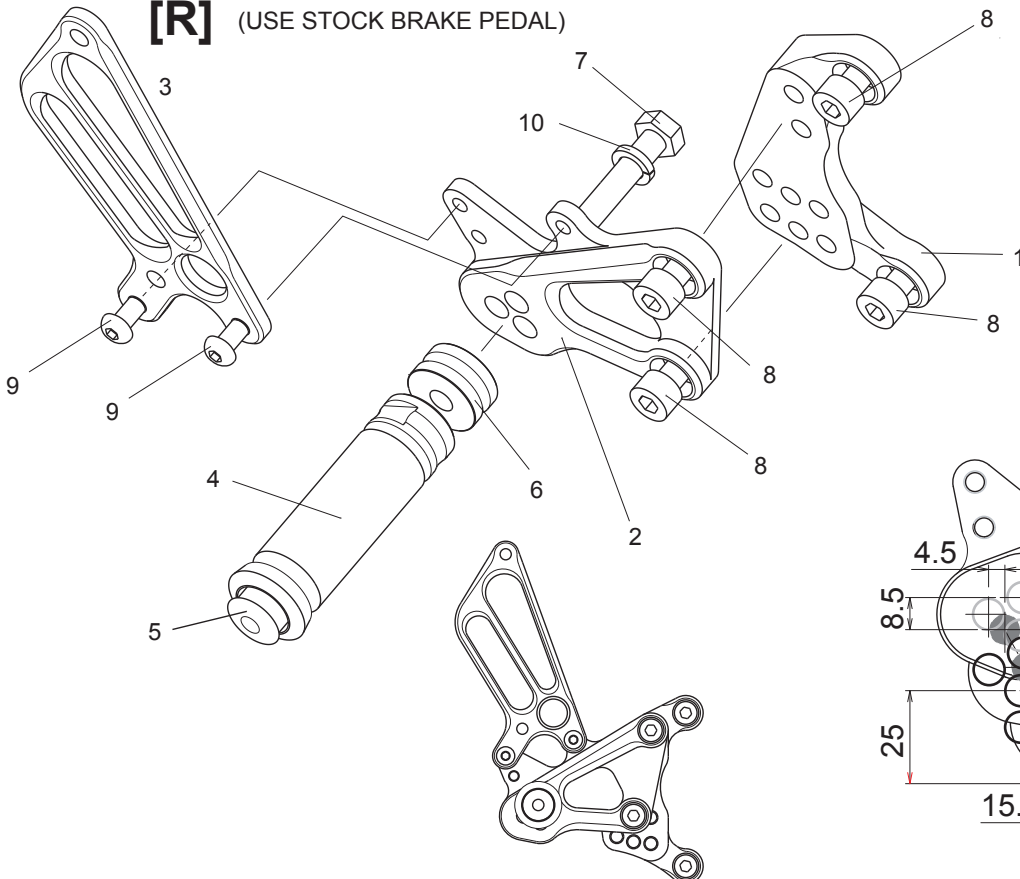
Flat side of foot peg bearing collar 5 (#10) should face step plate(#2). with the stepped side facing out toward pedal bearing.



## [R] (USE STOCK BRAKE PEDAL)

## [R] SIDE

1. BASE PLATE [R]
2. STEP PLATE [R]
3. HEEL GUARD [R](HG6)
4. FOOT PEG
5. FOOT PEG END CAP
6. FOOT PEG COLLAR 12
7. HEX HEAD M8×45mm
8. SOCKET HEAD M8×15mm ×4
9. BUTTON HEAD M6×10mm ×2
10. SPLIT WASHER M8



● STOCK POSITION