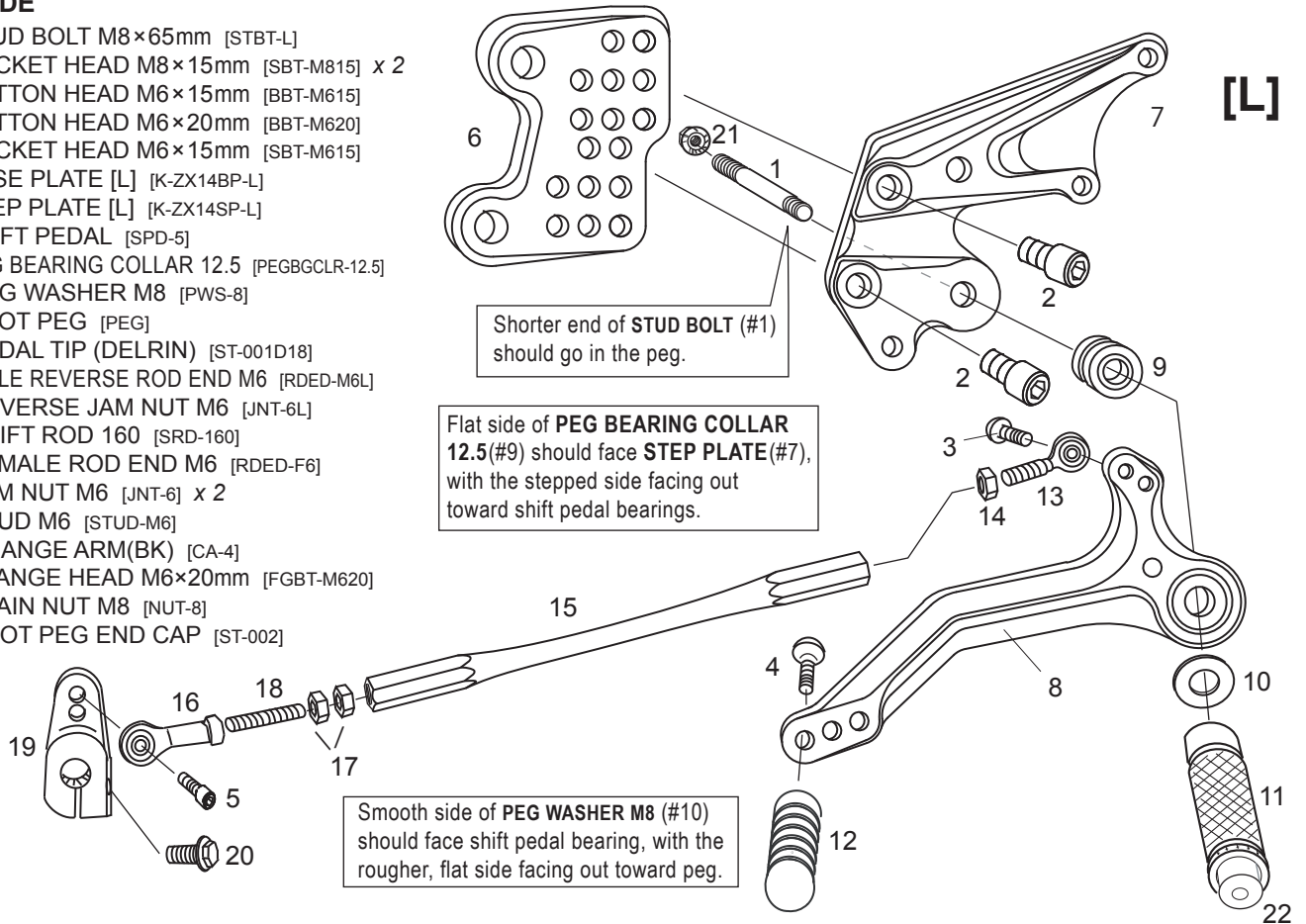


KAWASAKI ZX-14 (ZZR1400) ('06-'11) REVERSE SHIFT REAR SETS part# K-ZX14RSR

[L]-SIDE

1. STUD BOLT M8×65mm [STBT-L]
2. SOCKET HEAD M8×15mm [SBT-M815] x 2
3. BUTTON HEAD M6×15mm [BBT-M615]
4. BUTTON HEAD M6×20mm [BBT-M620]
5. SOCKET HEAD M6×15mm [SBT-M615]
6. BASE PLATE [L] [K-ZX14BP-L]
7. STEP PLATE [L] [K-ZX14SP-L]
8. SHIFT PEDAL [SPD-5]
9. PEG BEARING COLLAR 12.5 [PEGBGCLR-12.5]
10. PEG WASHER M8 [PWS-8]
11. FOOT PEG [PEG]
12. PEDAL TIP (DELRIN) [ST-001D18]
13. MALE REVERSE ROD END M6 [RDED-M6L]
14. REVERSE JAM NUT M6 [JNT-6L]
15. SHIFT ROD 160 [SRD-160]
16. FEMALE ROD END M6 [RDED-F6]
17. JAM NUT M6 [JNT-6] x 2
18. STUD-M6 [STUD-M6]
19. CHANGE ARM(BK) [CA-4]
20. FLANGE HEAD M6×20mm [FGBT-M620]
21. PLAIN NUT M8 [NUT-8]
22. FOOT PEG END CAP [ST-002]

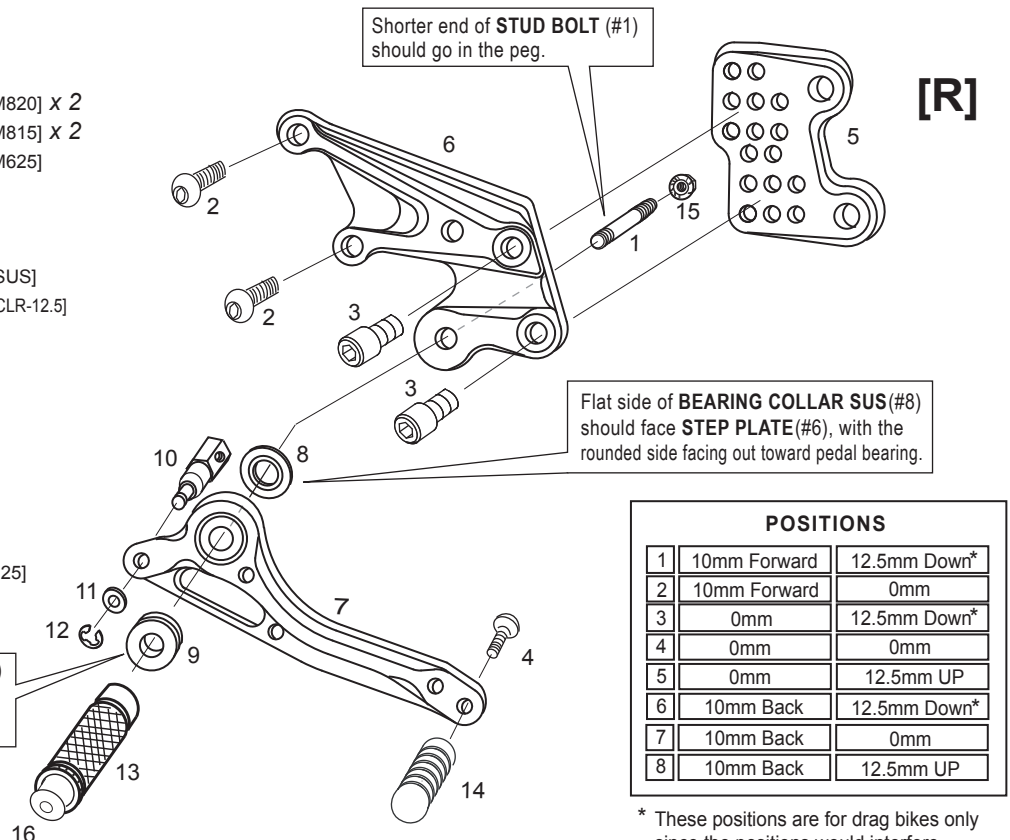


[R]-SIDE

1. STUD BOLT M8×65mm [STBT-L]
2. BUTTON HEAD M8×20mm [BBT-M820] x 2
3. SOCKET HEAD M8×15mm [SBT-M815] x 2
4. BUTTON HEAD M6×25mm [BBT-M625]
5. BASE PLATE [R] [K-ZX14BP-R]
6. STEP PLATE [R] [K-ZX14SP-R]
7. BRAKE PEDAL 130 [BPD-7]
8. BEARING COLLAR SUS [BGCLR-SUS]
9. PEG BEARING COLLAR 12.5 [PEGBGCLR-12.5]
10. BRAKE ROD M40 [BRD-M40]
11. WASHER M6 [WS-6]
12. E CLIP M6 [ECP-6]
13. FOOT PEG [PEG]
14. PEDAL TIP (DELRIN) [ST-001D18]
15. FLANGE NUT M8 [FNT-8]
16. FOOT PEG END CAP [ST-002]

Not pictured:
BRAKE LIGHT SWITCH P-1.25 [BSW-125]

Flat side of **PEG BEARING COLLAR 12.5 (#9)** should face foot peg, with the stepped side facing in toward pedal bearing.



POSITIONS

| | | |
|---|--------------|--------------|
| 1 | 10mm Forward | 12.5mm Down* |
| 2 | 10mm Forward | 0mm |
| 3 | 0mm | 12.5mm Down* |
| 4 | 0mm | 0mm |
| 5 | 0mm | 12.5mm UP |
| 6 | 10mm Back | 12.5mm Down* |
| 7 | 10mm Back | 0mm |
| 8 | 10mm Back | 12.5mm UP |

* These positions are for drag bikes only since the positions would interfere with the sidestand on a stock ZX14 bike.